



Charlie Crist
Governor
Cynthia R. Lorenzo
Director

FOR IMMEDIATE RELEASE
EMBARGOED: March 10, 2010, 10:00AM

CONTACT: Robby Cunningham
(850) 245-7130
robbey.cunningham@flaawi.com

Florida's January Employment Figures Released

www.employflorida.com – www.FlaRecovery.com

NOTE TO EDITORS: Every March, the U.S. Department of Labor's Bureau of Labor Statistics and the Florida Agency for Workforce Innovation release January employment and unemployment estimates as well as revised historical data. Today's report is the result of that annual process, which is known as "benchmarking." These benchmark revisions are a standard part of the estimation process and take place this same time every year in each state nationwide. As a result of this annual benchmarking process, the release of January and February 2010 employment data is scheduled for March 10 and March 26, respectively.

TALLAHASSEE – Florida's seasonally adjusted unemployment rate is 11.9 percent in January 2010, up 0.2 percentage point from the December revised rate of 11.7 percent, and up from 8.7 percent a year ago. January's rate equals the May 1975 rate, the highest in the recorded series. Florida's unemployment rate remained higher than the national average, which was 9.7 percent in January.

Florida's total nonagricultural employment in January 2010 is 7,144,300, representing a decline of 6,100 jobs (-0.1 percent) over the month and a job loss of 303,200 jobs, or -4.1 percent, compared to January 2009. Florida's rate of job decline is steeper than the national rate of decline for January which is -3.0 percent over the year.

Employer Tax Relief

On the first day of Florida's Legislative Session last week, state lawmakers and Governor Charlie Crist approved a bill to bring much-needed tax relief to Florida's businesses. The new law reduces the minimum rate of unemployment tax businesses owe from \$100.30 to \$25.50 per employee.

The bill also extended until February 27, 2010 Florida's Extended Benefits program for unemployment compensation customers who have exhausted all state and federally funded Emergency Unemployment Compensation benefits. Extended Benefits will immediately provide benefits to nearly 20,000 Floridians for up to eight additional weeks. The agency is notifying Floridians who may be eligible by mail. Those who believe they may be eligible may apply online at www.floridajobs.org or by mail or fax using the application they will receive from the agency.

"Under the leadership of Governor Crist and with the support of Florida's Legislature, Florida businesses will benefit from a dramatically reduced employer tax rate that will help companies avoid layoffs and support economic growth," said Agency for Workforce Innovation Director Cynthia R. Lorenzo. "This new law also provides federally funded Extended Benefits to assist nearly 20,000 Floridians who have exhausted their unemployment benefits."

Florida Back to Work

Governor Crist today announced that AWI, in partnership with the Florida Department of Children and Families, Workforce Florida Inc., and the state's Regional Workforce Boards, will receive its first installment of \$61.2 million from the U.S. Department of Health and Human Services in the \$200 million [Florida Back to Work](#) initiative. Distribution of the remaining funds will follow. Once these funds are released, Florida is ready to begin implementing the program statewide and putting Floridians back into the workforce.

Agency for Workforce Innovation

The Caldwell Building, Suite 100•107 East Madison Street•Tallahassee, Florida•32399-4120
Telephone (850) 245-7105•Fax (850) 921-3223•TTY/TDD 1-800-955-8771-Voice 1-800-955-8770

www.floridajobs.org

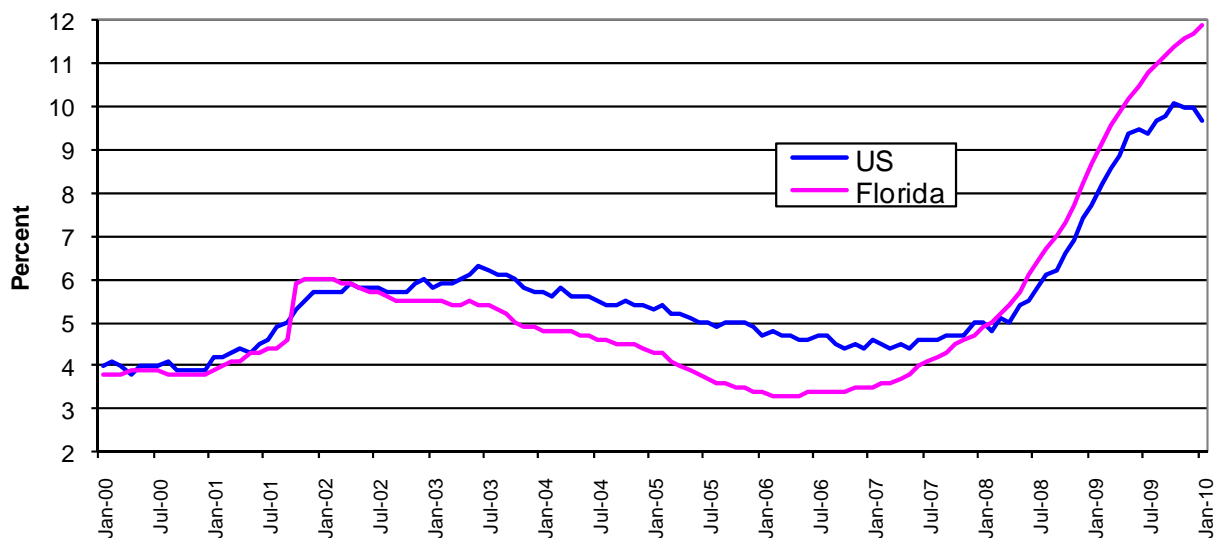
Florida Back to Work will employ Floridians who receive, or are eligible to receive, Temporary Assistance for Needy Families (TANF). To date, the agency has received more than 1,100 proposals from businesses around the state. Participating employers will post job openings on the Employ Florida Marketplace at www.employflorida.com as positions become available. Please visit www.floridajobs.org to learn more.

Census Hiring Impact

The Census Bureau, as part of the 2010 count of U.S. residents, is in the process of hiring thousands of employees between now and September to assist with the count in Florida. The state anticipates the Census will employ more than 63,700 Floridians over the duration of the process with salaries in the \$9-\$16 per hour range. Census job openings, both full and part-time, are posted in the Employ Florida Marketplace at www.employflorida.com.

These positions will be critical to the state's effort to ensure an accurate count so that Floridians receive their fair share of funding and representation in Washington, D.C., during the next decade. For more information on the 2010 Census, please visit www.sunshinecensus2010.com.

United States and Florida Unemployment Rates (seasonally adjusted)



Source: Florida Agency for Workforce Innovation, Labor Market Statistics Center, Local Area Unemployment Statistics Program, in cooperation with the U.S. Department of Labor, Bureau of Labor Statistics.

Florida's Nonagricultural Employment by Industry (Seasonally Adjusted)

- The number of jobs in Florida is 7,144,300, down 303,200 in January 2010 compared to a year ago. The industry losing the most jobs is construction (-90,700 jobs, -20.4 percent).
- Other industries losing jobs over the year include: trade, transportation, and utilities (-56,600 jobs, -3.7 percent); professional and business services (-44,900 jobs, -4.2 percent); manufacturing (-42,200 jobs, -12.2 percent); leisure and hospitality (-39,700 jobs, -4.3 percent); financial activities (-27,800 jobs, -5.6 percent); information (-13,700 jobs, -9.2 percent); other services (-8,400 jobs, -2.6 percent); and total government (-2,500 jobs, -0.2 percent).
- These industry job losses are partially due to weakness in specialty trade contractors; merchant wholesalers of durable goods; employment services; fabricated metal product manufacturing; food services and drinking places; credit intermediation; publishing; membership associations and organizations; and local government.
- Private education and health services (+23,600 jobs, +2.2 percent) is the only sector gaining jobs among Florida's major industries. Most of the increase is due to health care and social assistance (+19,500 jobs, +2.1 percent), primarily in ambulatory health care services. Private education increased by 4,100 jobs (+2.9 percent) over the year.

Local Area Unemployment Statistics (Not Seasonally Adjusted)

- In January 2010, Liberty County has the state's lowest unemployment rate (7.5 percent), followed by Monroe County (8.2 percent), Leon County (8.5 percent), and Alachua County (8.7 percent). Many of the counties with the lowest unemployment rates are those with relatively high proportions of government employment.
- Flagler County (17.1 percent) has the highest unemployment rate in Florida in January 2010, followed by Hernando (15.7 percent); Marion County (15.4 percent); Hardee and St. Lucie counties (14.9 percent); and Citrus County (14.6 percent). The counties with the highest unemployment rates in the state experienced continued weakness in construction, manufacturing, and financial activities. There were 57 Florida counties with double-digit unemployment rates in January, up from 51 the previous month.

Area Nonagricultural Employment (Not Seasonally Adjusted)

- All metro areas in the state except one lost jobs over the year in January 2010. The Panama City-Lynn Haven-Panama City Beach metro area gained 200 jobs (+0.3 percent) over the year. Metro areas with the steepest declines include Sebastian-Vero Beach (-7.3 percent, -3,400 jobs); Naples-Marco Island (-6.2 percent, -7,200 jobs); Ocala (-6.0 percent, -5,700 jobs); and Cape Coral-Ft. Myers (-5.6 percent, -11,700 jobs).

Note: These unemployment and job growth rates are estimates, which are primarily based on surveys created and mandated by the U.S. Bureau of Labor Statistics in cooperation with the Florida Agency for Workforce Innovation.

The unemployment rate is derived from Florida household surveys conducted by the U.S. Census Bureau under contract with the US Bureau of Labor Statistics. The job growth rate is derived from Florida employer surveys conducted by the U.S. Bureau of Labor Statistics.

Both estimates are revised on a monthly basis. In addition, these estimates are benchmarked (revised) annually based on actual counts from Florida's Unemployment Compensation tax records and other data.

New procedures recently mandated by the U.S. Bureau of Labor Statistics may result in more variable month-to-month changes. For further information, go to: <http://www.bls.gov/sae/cesprocs.htm>

###

An equal opportunity employer/ program. Auxiliary aids and services are available upon request to individuals with disabilities. All voice telephone numbers on this document may be reached by persons using TTY/TDD equipment via the Florida Relay Service at 711.

The Agency for Workforce Innovation is Florida's lead workforce agency and directly administers the state's various workforce and unemployment programs and the Office of Early Learning. Workforce development policy and guidance are provided by Workforce Florida, Inc. Partnering together, along with the state's 24 Regional Workforce Boards that deliver services through nearly 90 One-Stop Career Centers around the state, they compose the Employ Florida network.

The next Florida Employment and Unemployment release will be on March 26, 2010 at 10:00 A.M.

LABOR FORCE STATUS OF THE CIVILIAN NONINSTITUTIONAL POPULATION
RELEASE DATE: MARCH 10, 2010

SEASONALLY ADJUSTED

	Current Month January 2010	Month Ago December 2009	Year Ago January 2009	Over-the-Month Change		Over-the-Year Change	
				Level	Percent	Level	Percent

STATE OF FLORIDA

Civilian Noninstitutional Population 16+	14,660,000	14,653,000	14,556,000	7,000	**	104,000	0.7
Civilian Labor Force	9,231,000	9,212,000	9,206,000	19,000	0.2	25,000	0.3
Employment	8,131,000	8,133,000	8,406,000	-2,000	**	-275,000	-3.3
Unemployment	1,100,000	1,079,000	800,000	21,000	1.9	300,000	37.5
Unemployment Rate (%)	11.9	11.7	8.7	0.2	--	3.2	--

UNITED STATES

Civilian Noninstitutional Population 16+	236,832,000	236,924,000	234,739,000	-92,000	**	2,093,000	0.9
Civilian Labor Force	153,170,000	153,059,000	154,140,000	111,000	0.1	-970,000	-0.6
Employment	138,333,000	137,792,000	142,221,000	541,000	0.4	-3,888,000	-2.7
Unemployment	14,837,000	15,267,000	11,919,000	-430,000	-2.8	2,918,000	24.5
Unemployment Rate (%)	9.7	10.0	7.7	-0.3	--	2.0	--

NOT SEASONALLY ADJUSTED

	Current Month January 2010	Month Ago December 2009	Year Ago January 2009	Over-the-Month Change		Over-the-Year Change	
				Level	Percent	Level	Percent

STATE OF FLORIDA

Civilian Noninstitutional Population 16+	14,660,000	14,653,000	14,556,000	7,000	**	104,000	0.7
Civilian Labor Force	9,179,000	9,180,000	9,131,000	-1,000	**	48,000	0.5
Employment	8,062,000	8,112,000	8,317,000	-50,000	-0.6	-255,000	-3.1
Unemployment	1,117,000	1,067,000	813,000	50,000	4.7	304,000	37.4
Unemployment Rate (%)	12.2	11.6	8.9	0.6	--	3.3	--

UNITED STATES

Civilian Noninstitutional Population 16+	236,832,000	236,924,000	234,739,000	-92,000	**	2,093,000	0.9
Civilian Labor Force	152,957,000	152,693,000	153,445,000	264,000	0.2	-488,000	-0.3
Employment	136,809,000	137,953,000	140,436,000	-1,144,000	-0.8	-3,627,000	-2.6
Unemployment	16,147,000	14,740,000	13,009,000	1,407,000	9.5	3,138,000	24.1
Unemployment Rate (%)	10.6	9.7	8.5	0.9	--	2.1	--

** = Less than 0.05 percent

Note: All estimates except unemployment rates are rounded to the nearest thousand. Items may not add to totals or compute to displayed percentages due to rounding. All data are subject to revision.

Nonagricultural Employment in Florida
Seasonally Adjusted (in thousands)

	January ^P 2010	December ^r 2009	January 2009	Over-the-Month Change		Over-the-Year Change	
				Level	Percent	Level	Percent
Total Nonagricultural Employment	7,144.3	7,150.4	7,447.5	-6.1	-0.1	-303.2	-4.1
Construction	353.1	358.6	443.8	-5.5	-1.5	-90.7	-20.4
Manufacturing	304.6	305.1	346.8	-0.5	-0.2	-42.2	-12.2
Trade, Transportation, and Utilities	1,457.7	1,447.2	1,514.3	10.5	0.7	-56.6	-3.7
Wholesale Trade	312.9	312.2	330.8	0.7	0.2	-17.9	-5.4
Retail Trade	917.3	909.1	944.9	8.2	0.9	-27.6	-2.9
Transportation, Warehousing, and Utilities	227.5	225.9	238.6	1.6	0.7	-11.1	-4.7
Information	135.4	136.7	149.1	-1.3	-1.0	-13.7	-9.2
Financial Activities	470.6	471.5	498.4	-0.9	-0.2	-27.8	-5.6
Finance and Insurance	318.0	319.9	338.1	-1.9	-0.6	-20.1	-5.9
Real Estate, Rental, and Leasing	152.6	151.6	160.3	1.0	0.7	-7.7	-4.8
Professional and Business Services	1,027.3	1,041.0	1,072.2	-13.7	-1.3	-44.9	-4.2
Professional and Technical Services	429.1	427.6	443.6	1.5	0.4	-14.5	-3.3
Management of Companies and Enterprises	79.3	79.9	82.5	-0.6	-0.8	-3.2	-3.9
Administrative and Waste Services	518.9	533.5	546.1	-14.6	-2.7	-27.2	-5.0
Education and Health Services	1,073.8	1,070.0	1,050.2	3.8	0.4	23.6	2.2
Educational Services	144.9	143.7	140.8	1.2	0.8	4.1	2.9
Health Care and Social Assistance	928.9	926.3	909.4	2.6	0.3	19.5	2.1
Leisure and Hospitality	886.9	894.8	926.6	-7.9	-0.9	-39.7	-4.3
Arts, Entertainment, and Recreation	173.8	181.0	187.4	-7.2	-4.0	-13.6	-7.3
Accommodation and Food Services	713.1	713.8	739.2	-0.7	-0.1	-26.1	-3.5
Other Services	309.6	308.7	318.0	0.9	0.3	-8.4	-2.6
Total Government	1,119.9	1,111.4	1,122.4	8.5	0.8	-2.5	-0.2
Local Government	766.9	764.6	775.4	2.3	0.3	-8.5	-1.1

^P = preliminary, ^r = revised

Note: Sum of detail may not equal totals due to rounding or the exclusion of certain industries from publication. All data are subject to revision.

Released March 10, 2010.

Source: Florida Agency for Workforce Innovation, Labor Market Statistics Center, Current Employment Statistics Program in cooperation with the U.S. Department of Labor, Bureau of Labor Statistics.

**NONAGRICULTURAL EMPLOYMENT IN FLORIDA
STATEWIDE (Not Seasonally Adjusted)**

Released March 10, 2010

Industry Title	January 2010	December 2009	January 2009	Change from			
				Dec 2009 to Jan 2010 Level	Jan 2009 to Jan 2010 Percent	Jan 2009 to Jan 2010 Level	Jan 2009 to Jan 2010 Percent
Total Nonagricultural Employment	7,130,800	7,237,300	7,404,000	-106,500	-1.5%	-273,200	-3.7%
Total Private	6,000,500	6,107,100	6,270,300	-106,600	-1.8%	-269,800	-4.3%
Goods Producing	659,800	675,600	780,600	-15,800	-2.3%	-120,800	-15.5%
Mining and Logging	5,400	5,400	5,700	0	0.0%	-300	-5.3%
Mining, except Oil and Gas	3,200	3,200	3,500	0	0.0%	-300	-8.6%
Construction	349,800	362,600	429,800	-12,800	-3.5%	-80,000	-18.6%
Construction of Buildings	62,600	67,200	87,700	-4,600	-6.9%	-25,100	-28.6%
Heavy and Civil Engineering Construction	50,300	51,500	58,100	-1,200	-2.3%	-7,800	-13.4%
Specialty Trade Contractors	236,900	243,900	284,000	-7,000	-2.9%	-47,100	-16.6%
Building Equipment Contractors	107,700	109,300	125,800	-1,600	-1.5%	-18,100	-14.4%
Manufacturing	304,600	307,600	345,100	-3,000	-1.0%	-40,500	-11.7%
Durable Goods	197,600	200,800	229,900	-3,200	-1.6%	-32,300	-14.1%
Fabricated Metal Product Manufacturing	26,400	27,200	34,400	-800	-2.9%	-8,000	-23.3%
Computer and Electronic Product Manufacturing	42,700	43,000	46,500	-300	-0.7%	-3,800	-8.2%
Communications Equipment Manufacturing	7,700	7,700	8,100	0	0.0%	-400	-4.9%
Transportation Equipment Manufacturing	32,200	32,900	38,100	-700	-2.1%	-5,900	-15.5%
Aerospace Product and Parts Manufacturing	18,600	18,500	20,100	100	0.5%	-1,500	-7.5%
Miscellaneous Durable Goods Manufacturing	27,200	27,000	29,200	200	0.7%	-2,000	-6.9%
Nondurable Goods	107,000	106,800	115,200	200	0.2%	-8,200	-7.1%
Food Manufacturing	28,400	28,300	29,500	100	0.4%	-1,100	-3.7%
Beverage and Tobacco Product Manufacturing	9,800	9,800	10,300	0	0.0%	-500	-4.9%
Paper Manufacturing	9,300	9,300	9,900	0	0.0%	-600	-6.1%
Printing and Related Support Activities	16,900	17,500	20,000	-600	-3.4%	-3,100	-15.5%
Chemical Manufacturing	19,200	19,100	19,700	100	0.5%	-500	-2.5%

Source: Florida Agency for Workforce Innovation, Labor Market Statistics Center, Current Employment Statistics Program (in cooperation with the U.S. Department of Labor, Bureau of Labor Statistics).

**NONAGRICULTURAL EMPLOYMENT IN FLORIDA
STATEWIDE (Not Seasonally Adjusted)**

Released March 10, 2010

Industry Title	January 2010	December 2009	January 2009	Change from			
				Dec 2009 to Jan 2010 Level	Jan 2009 to Jan 2010 Percent	Jan 2009 to Jan 2010 Level	Jan 2009 to Jan 2010 Percent
Service Providing	6,471,000	6,561,700	6,623,400	-90,700	-1.4%	-152,400	-2.3%
Private Service Providing	5,340,700	5,431,500	5,489,700	-90,800	-1.7%	-149,000	-2.7%
Trade, Transportation, and Utilities	1,456,300	1,485,400	1,511,400	-29,100	-2.0%	-55,100	-3.7%
Wholesale Trade	310,500	313,600	329,000	-3,100	-1.0%	-18,500	-5.6%
Merchant Wholesalers, Durable Goods	156,000	157,900	169,000	-1,900	-1.2%	-13,000	-7.7%
Commercial Equipment Wholesalers	43,900	44,200	46,500	-300	-0.7%	-2,600	-5.6%
Electronic Goods Wholesalers	20,300	20,500	22,300	-200	-1.0%	-2,000	-9.0%
Machinery and Supply Wholesalers	26,800	27,300	30,300	-500	-1.8%	-3,500	-11.6%
Merchant Wholesalers, Nondurable Goods	112,800	113,500	117,500	-700	-0.6%	-4,700	-4.0%
Grocery and Related Product Wholesalers	44,400	44,500	45,200	-100	-0.2%	-800	-1.8%
Wholesale Electronic Markets and Agents	41,700	42,200	42,500	-500	-1.2%	-800	-1.9%
Retail Trade	918,900	940,100	944,200	-21,200	-2.3%	-25,300	-2.7%
Motor Vehicle and Parts Dealers	105,700	108,000	110,900	-2,300	-2.1%	-5,200	-4.7%
Automobile Dealers	61,600	63,100	69,100	-1,500	-2.4%	-7,500	-10.9%
Furniture and Home Furnishings Stores	31,700	32,000	34,500	-300	-0.9%	-2,800	-8.1%
Electronics and Appliance Stores	33,500	35,400	36,100	-1,900	-5.4%	-2,600	-7.2%
Building Material and Garden Supply Stores	64,200	65,900	70,800	-1,700	-2.6%	-6,600	-9.3%
Food and Beverage Stores	186,000	186,500	191,000	-500	-0.3%	-5,000	-2.6%
Health and Personal Care Stores	69,700	69,900	71,000	-200	-0.3%	-1,300	-1.8%
Gasoline Stations	36,400	36,300	36,200	100	0.3%	200	0.6%
Clothing and Accessory Stores	102,500	108,500	104,700	-6,000	-5.5%	-2,200	-2.1%
Sporting Goods, Hobby, Book, and Music Stores	34,300	35,700	36,000	-1,400	-3.9%	-1,700	-4.7%
General Merchandise Stores	183,300	190,300	180,600	-7,000	-3.7%	2,700	1.5%
Department Stores	80,100	84,900	80,500	-4,800	-5.7%	-400	-0.5%
Other General Merchandise Stores	103,200	105,400	100,100	-2,200	-2.1%	3,100	3.1%
Miscellaneous Store Retailers	49,300	49,100	49,700	200	0.4%	-400	-0.8%
Nonstore Retailers	22,300	22,500	22,700	-200	-0.9%	-400	-1.8%
Electronic Shopping and Mail-Order Houses	14,200	14,700	14,700	-500	-3.4%	-500	-3.4%
Transportation, Warehousing, and Utilities	226,900	231,700	238,200	-4,800	-2.1%	-11,300	-4.7%
Utilities	23,300	23,500	23,700	-200	-0.9%	-400	-1.7%

Source: Florida Agency for Workforce Innovation, Labor Market Statistics Center, Current Employment Statistics Program (in cooperation with the U.S. Department of Labor, Bureau of Labor Statistics).

**NONAGRICULTURAL EMPLOYMENT IN FLORIDA
STATEWIDE (Not Seasonally Adjusted)**

Released March 10, 2010

Industry Title	January 2010	December 2009	January 2009	Change from			
				Dec 2009 to Jan 2010 Level	Dec 2009 to Jan 2010 Percent	Jan 2009 to Jan 2010 Level	Jan 2009 to Jan 2010 Percent
Transportation and Warehousing	203,600	208,200	214,500	-4,600	-2.2%	-10,900	-5.1%
Air Transportation	30,700	30,800	31,000	-100	-0.3%	-300	-1.0%
Water Transportation	12,200	12,200	12,200	0	0.0%	0	0.0%
Truck Transportation	40,500	40,700	44,200	-200	-0.5%	-3,700	-8.4%
Support Activities for Transportation	45,300	45,000	47,700	300	0.7%	-2,400	-5.0%
Couriers and Messengers	27,900	33,100	30,400	-5,200	-15.7%	-2,500	-8.2%
Warehousing and Storage	25,400	25,600	26,900	-200	-0.8%	-1,500	-5.6%
Information	135,000	137,300	147,900	-2,300	-1.7%	-12,900	-8.7%
Publishing Industries, except Internet	31,900	32,500	36,400	-600	-1.9%	-4,500	-12.4%
Broadcasting, except Internet	13,400	13,500	14,900	-100	-0.7%	-1,500	-10.1%
Telecommunications	58,100	59,200	62,200	-1,100	-1.9%	-4,100	-6.6%
Wired Telecommunications Carriers	44,500	44,700	47,400	-200	-0.5%	-2,900	-6.1%
Internet Service Providers and Data Processing	16,600	16,700	17,500	-100	-0.6%	-900	-5.1%
Financial Activities	468,200	472,300	493,700	-4,100	-0.9%	-25,500	-5.2%
Finance and Insurance	316,300	320,200	335,600	-3,900	-1.2%	-19,300	-5.8%
Credit Intermediation and Related Activities	149,300	150,600	160,900	-1,300	-0.9%	-11,600	-7.2%
Depository Credit Intermediation	93,000	93,800	99,000	-800	-0.9%	-6,000	-6.1%
Insurance Carriers and Related Activities	125,000	126,200	131,900	-1,200	-1.0%	-6,900	-5.2%
Insurance Carriers	68,900	69,400	72,400	-500	-0.7%	-3,500	-4.8%
Insurance Agencies, Brokerages, and Related	56,100	56,800	59,500	-700	-1.2%	-3,400	-5.7%
Real Estate, Rental, and Leasing	151,900	152,100	158,100	-200	-0.1%	-6,200	-3.9%
Real Estate	114,000	114,600	115,900	-600	-0.5%	-1,900	-1.6%
Professional and Business Services	1,024,600	1,054,500	1,059,500	-29,900	-2.8%	-34,900	-3.3%
Professional and Technical Services	430,000	432,900	444,700	-2,900	-0.7%	-14,700	-3.3%
Legal Services	87,100	89,000	87,800	-1,900	-2.1%	-700	-0.8%
Accounting, Tax Preparation, and Bookkeeping	52,200	51,300	63,700	900	1.8%	-11,500	-18.1%
Architectural, Engineering, and Related	73,000	73,000	78,800	0	0.0%	-5,800	-7.4%
Computer Systems Design and Related	62,900	63,600	61,500	-700	-1.1%	1,400	2.3%
Management, Scientific, and Technical	73,000	73,500	68,200	-500	-0.7%	4,800	7.0%
Management of Companies and Enterprises	79,300	80,200	82,500	-900	-1.1%	-3,200	-3.9%

Source: Florida Agency for Workforce Innovation, Labor Market Statistics Center, Current Employment Statistics Program (in cooperation with the U.S. Department of Labor, Bureau of Labor Statistics).

**NONAGRICULTURAL EMPLOYMENT IN FLORIDA
STATEWIDE (Not Seasonally Adjusted)**

Released March 10, 2010

Industry Title	January 2010	December 2009	January 2009	Change from			
				Dec 2009 to Jan 2010 Level	Dec 2009 to Jan 2010 Percent	Jan 2009 to Jan 2010 Level	Jan 2009 to Jan 2010 Percent
Administrative and Waste Services	515,300	541,400	532,300	-26,100	-4.8%	-17,000	-3.2%
Administrative and Support Services	496,100	522,200	512,900	-26,100	-5.0%	-16,800	-3.3%
Employment Services	146,400	164,100	161,500	-17,700	-10.8%	-15,100	-9.4%
Business Support Services	62,300	63,400	65,700	-1,100	-1.7%	-3,400	-5.2%
Travel Arrangement and Reservation Services	25,800	27,100	28,700	-1,300	-4.8%	-2,900	-10.1%
Investigation and Security Services	60,400	61,600	62,700	-1,200	-2.0%	-2,300	-3.7%
Services to Buildings and Dwellings	130,600	133,100	129,200	-2,500	-1.9%	1,400	1.1%
Waste Management and Remediation Services	19,200	19,200	19,400	0	0.0%	-200	-1.0%
Education and Health Services	1,073,800	1,078,500	1,045,000	-4,700	-0.4%	28,800	2.8%
Educational Services	145,700	147,000	141,300	-1,300	-0.9%	4,400	3.1%
Elementary and Secondary Schools	46,700	47,300	46,900	-600	-1.3%	-200	-0.4%
Colleges and Universities	59,100	60,100	54,700	-1,000	-1.7%	4,400	8.0%
Health Care and Social Assistance	928,100	931,500	903,700	-3,400	-0.4%	24,400	2.7%
Ambulatory Health Care Services	393,800	394,900	376,500	-1,100	-0.3%	17,300	4.6%
Offices of Physicians	175,400	176,600	169,700	-1,200	-0.7%	5,700	3.4%
Home Health Care Services	63,100	62,900	58,400	200	0.3%	4,700	8.1%
Hospitals	251,800	252,600	250,700	-800	-0.3%	1,100	0.4%
Nursing and Residential Care Facilities	172,500	172,900	168,200	-400	-0.2%	4,300	2.6%
Nursing Care Facilities	95,200	95,100	92,300	100	0.1%	2,900	3.1%
Community Care for the Elderly	46,600	46,800	46,100	-200	-0.4%	500	1.1%
Social Assistance	110,000	111,100	108,300	-1,100	-1.0%	1,700	1.6%
Leisure and Hospitality	875,300	892,900	916,300	-17,600	-2.0%	-41,000	-4.5%
Arts, Entertainment, and Recreation	171,300	181,100	186,300	-9,800	-5.4%	-15,000	-8.1%
Amusement, Gambling, and Recreation	137,000	143,700	146,500	-6,700	-4.7%	-9,500	-6.5%
Amusement Parks and Arcades	53,000	56,200	54,100	-3,200	-5.7%	-1,100	-2.0%
Accommodation and Food Services	704,000	711,800	730,000	-7,800	-1.1%	-26,000	-3.6%
Accommodation	141,000	143,200	153,500	-2,200	-1.5%	-12,500	-8.1%
Food Services and Drinking Places	563,000	568,600	576,500	-5,600	-1.0%	-13,500	-2.3%

Source: Florida Agency for Workforce Innovation, Labor Market Statistics Center, Current Employment Statistics Program (in cooperation with the U.S. Department of Labor, Bureau of Labor Statistics).

**NONAGRICULTURAL EMPLOYMENT IN FLORIDA
STATEWIDE (Not Seasonally Adjusted)**

Released March 10, 2010

Industry Title	January 2010	December 2009	January 2009	Change from			
				Dec 2009 to Jan 2010 Level	Dec 2009 to Jan 2010 Percent	Jan 2009 to Jan 2010 Level	Jan 2009 to Jan 2010 Percent
Other Services	307,500	310,600	315,900	-3,100	-1.0%	-8,400	-2.7%
Repair and Maintenance	64,900	65,900	67,500	-1,000	-1.5%	-2,600	-3.9%
Automotive Repair and Maintenance	44,400	44,200	45,200	200	0.5%	-800	-1.8%
Personal and Laundry Services	79,700	81,700	81,400	-2,000	-2.5%	-1,700	-2.1%
Membership Associations and Organizations	162,900	163,000	167,000	-100	-0.1%	-4,100	-2.5%
Total Government	1,130,300	1,130,200	1,133,700	100	0.0%	-3,400	-0.3%
Federal	132,900	130,500	131,100	2,400	1.8%	1,800	1.4%
State	218,400	216,800	217,700	1,600	0.7%	700	0.3%
Local	779,000	782,900	784,900	-3,900	-0.5%	-5,900	-0.8%

Note: Employment estimates have been rounded to the nearest hundred. Sum of detail may not equal totals due to rounding or the exclusion of certain industries from publication. All data are subject to revision.

STATE OF FLORIDA
LOCAL AREA UNEMPLOYMENT STATISTICS BY COUNTY
(NOT SEASONALLY ADJUSTED)

COUNTY	JANUARY 2010				DECEMBER 2009				JANUARY 2009			
	LABOR FORCE	EMPLOY- MENT	UNEMPLOYMENT LEVEL	RATE (%)	LABOR FORCE	EMPLOY- MENT	UNEMPLOYMENT LEVEL	RATE (%)	LABOR FORCE	EMPLOY- MENT	UNEMPLOYMENT LEVEL	RATE (%)
ALACHUA	130894	119459	11435	8.7	130642	120005	10637	8.1	129653	122106	7547	5.8
BAKER	12177	10720	1457	12.0	12243	10856	1387	11.3	12062	11095	967	8.0
BAY	88930	78348	10582	11.9	88691	78739	9952	11.2	86630	78299	8331	9.6
BRADFORD	12423	11185	1238	10.0	12434	11291	1143	9.2	12437	11573	864	6.9
BREVARD	267156	233321	33835	12.7	267335	235612	31723	11.9	266178	241730	24448	9.2
BROWARD	978373	872484	105889	10.8	980960	881136	99824	10.2	985014	909841	75173	7.6
CALHOUN	5876	5258	618	10.5	5879	5303	576	9.8	5849	5385	464	7.9
CHARLOTTE	68751	59258	9493	13.8	68615	59809	8806	12.8	69146	61717	7429	10.7
CITRUS	56966	48650	8316	14.6	56460	48808	7652	13.6	55969	49477	6492	11.6
CLAY	94998	84328	10670	11.2	95265	85400	9865	10.4	94857	87280	7577	8.0
COLLIER	145032	126629	18403	12.7	144446	127048	17398	12.0	147139	134140	12999	8.8
COLUMBIA	31983	28269	3714	11.6	31648	28165	3483	11.0	31606	29133	2473	7.8
DESOTO	15779	14015	1764	11.2	15232	13570	1662	10.9	15246	14017	1229	8.1
DIXIE	5820	4998	822	14.1	5746	5009	737	12.8	5514	4940	574	10.4
DUVAL	444975	389014	55961	12.6	446567	393959	52608	11.8	441052	402633	38419	8.7
ESCAMBIA	140086	123630	16456	11.7	139893	124389	15504	11.1	136833	124419	12414	9.1
FLAGLER	32937	27298	5639	17.1	32715	27446	5269	16.1	32418	27952	4466	13.8
FRANKLIN	4816	4282	534	11.1	4828	4386	442	9.2	4662	4326	336	7.2
GADSDEN	21639	19119	2520	11.6	21416	19193	2223	10.4	21640	19484	2156	10.0
GILCHRIST	7901	7022	879	11.1	7894	7054	840	10.6	7811	7178	633	8.1
GLADES	4503	3969	534	11.9	4438	3961	477	10.7	4682	4299	383	8.2
GULF	6335	5562	773	12.2	6417	5692	725	11.3	6249	5683	566	9.1
HAMILTON	4922	4242	680	13.8	4866	4265	601	12.4	4891	4357	534	10.9
HARDEE	12218	10713	1505	12.3	12104	10693	1411	11.7	11932	10970	962	8.1
HENDRY	18059	15375	2684	14.9	17597	15021	2576	14.6	17553	15562	1991	11.3
HERNANDO	63726	53712	10014	15.7	63491	54025	9466	14.9	63078	55463	7615	12.1
HIGHLANDS	41937	36778	5159	12.3	41660	36789	4871	11.7	40853	36921	3932	9.6
HILLSBOROUGH	598727	522448	76279	12.7	597987	525492	72495	12.1	593124	539486	53638	9.0
HOLMES	8814	7956	858	9.7	8771	7993	778	8.9	8878	8202	676	7.6
INDIAN RIVER	62436	53471	8965	14.4	62170	53663	8507	13.7	62773	56363	6410	10.2
JACKSON	21862	19902	1960	9.0	22000	20206	1794	8.2	21800	20295	1505	6.9
JEFFERSON	6974	6273	701	10.1	6912	6297	615	8.9	6876	6393	483	7.0
LAFAYETTE	3099	2800	299	9.6	3083	2810	273	8.9	2966	2745	221	7.5
LAKE	136747	118271	18476	13.5	136876	119695	17181	12.6	135826	122943	12883	9.5
LEE	279517	240110	39407	14.1	277328	240076	37252	13.4	283785	252809	30976	10.9
LEON	148202	135661	12541	8.5	147925	136183	11742	7.9	146996	138251	8745	5.9
LEVY	16587	14212	2375	14.3	16490	14287	2203	13.4	16775	15070	1705	10.2
LIBERTY	3918	3623	295	7.5	3845	3591	254	6.6	3916	3700	216	5.5

STATE OF FLORIDA
LOCAL AREA UNEMPLOYMENT STATISTICS BY COUNTY
(NOT SEASONALLY ADJUSTED)

COUNTY	JANUARY 2010				DECEMBER 2009				JANUARY 2009			
	LABOR FORCE	EMPLOY- MENT	UNEMPLOYMENT LEVEL	UNEMPLOYMENT RATE (%)	LABOR FORCE	EMPLOY- MENT	UNEMPLOYMENT LEVEL	UNEMPLOYMENT RATE (%)	LABOR FORCE	EMPLOY- MENT	UNEMPLOYMENT LEVEL	UNEMPLOYMENT RATE (%)
MADISON	7128	6158	970	13.6	7181	6291	890	12.4	7045	6375	670	9.5
MANATEE	144269	125179	19090	13.2	144403	126264	18139	12.6	145107	130855	14252	9.8
MARION	134891	114108	20783	15.4	134346	114989	19357	14.4	136506	120754	15752	11.5
MARTIN	63262	54666	8596	13.6	63234	55236	7998	12.6	63064	57081	5983	9.5
MIAMI-DADE	1256655	1119183	137472	10.9	1258532	1113412	145120	11.5	1222735	1119107	103628	8.5
MONROE	45125	41440	3685	8.2	44794	41311	3483	7.8	45342	42540	2802	6.2
NASSAU	36249	31852	4397	12.1	36313	32257	4056	11.2	35975	32967	3008	8.4
OKALOOSA	96142	87343	8799	9.2	96470	88382	8088	8.4	95047	88399	6648	7.0
OKEECHOBEE	18595	16012	2583	13.9	18258	15831	2427	13.3	17987	16063	1924	10.7
ORANGE	597958	524523	73435	12.3	601191	530841	70350	11.7	597799	545242	52557	8.8
OSCEOLA	138169	119454	18715	13.5	138888	120893	17995	13.0	137288	124172	13116	9.6
PALM BEACH	613156	536695	76461	12.5	616282	544052	72230	11.7	621608	565861	55747	9.0
PASCO	198519	170220	28299	14.3	197489	171212	26277	13.3	196422	175772	20650	10.5
PINELLAS	446993	390132	56861	12.7	445883	392405	53478	12.0	444759	402855	41904	9.4
POLK	276121	239291	36830	13.3	275533	240582	34951	12.7	273632	247331	26301	9.6
PUTNAM	32188	27603	4585	14.2	31792	27540	4252	13.4	31871	28455	3416	10.7
ST. JOHNS	94786	84941	9845	10.4	95124	86021	9103	9.6	94929	87915	7014	7.4
ST. LUCIE	123202	104806	18396	14.9	123379	105897	17482	14.2	123764	109434	14330	11.6
SANTA ROSA	71010	63287	7723	10.9	70745	63677	7068	10.0	69335	63691	5644	8.1
SARASOTA	167031	144705	22326	13.4	166321	145961	20360	12.2	167705	151268	16437	9.8
SEMINOLE	237887	210238	27649	11.6	238846	212770	26076	10.9	237923	218542	19381	8.1
SUMTER	31779	28355	3424	10.8	31977	28781	3196	10.0	31097	28544	2553	8.2
SUWANNEE	17541	15368	2173	12.4	16841	14848	1993	11.8	16983	15520	1463	8.6
TAYLOR	9274	8074	1200	12.9	9216	8087	1129	12.3	9182	8231	951	10.4
UNION	5398	4857	541	10.0	5352	4853	499	9.3	5393	5069	324	6.0
VOLUSIA	253188	220217	32971	13.0	251986	220768	31218	12.4	251833	227604	24229	9.6
WAKULLA	16161	14668	1493	9.2	16083	14725	1358	8.4	15941	14948	993	6.2
WALTON	29965	27007	2958	9.9	30238	27526	2712	9.0	29761	27479	2282	7.7
WASHINGTON	10012	8783	1229	12.3	9948	8797	1151	11.6	9820	8870	950	9.7
FLORIDA												
NOT SEASONALLY ADJUSTED												
	9179000	8062000	1117000	12.2	9180000	8112000	1067000	11.6	9131000	8317000	813000	8.9
SEASONALLY ADJUSTED												
	9231000	8131000	1100000	11.9	9212000	8133000	1079000	11.7	9206000	8406000	800000	8.7
UNITED STATES												
NOT SEASONALLY ADJUSTED												
	152957000	136809000	16147000	10.6	152693000	137953000	14740000	9.7	153445000	140436000	13009000	8.5
SEASONALLY ADJUSTED												
	153170000	138333000	14837000	9.7	153059000	137792000	15267000	10.0	154140000	142221000	11919000	7.7

PAGE 2 OF 2

RELEASED MARCH 10, 2010

NOTE: Items may not add to totals or compute to displayed percentages due to rounding. All data are subject to revision.

SOURCE: Florida Agency for Workforce Innovation, Labor Market Statistics Center, Local Area Unemployment Statistics Program, in cooperation with the U.S. Department of Labor, Bureau of Labor Statistics.

STATE OF FLORIDA
LOCAL AREA UNEMPLOYMENT STATISTICS BY METROPOLITAN STATISTICAL AREA (MSA)
(NOT SEASONALLY ADJUSTED)

MSA (COUNTIES)	JANUARY 2010				DECEMBER 2009				JANUARY 2009			
	LABOR FORCE	EMPLOY- MENT	UNEMPLOYMENT LEVEL	UNEMPLOYMENT RATE (%)	LABOR FORCE	EMPLOY- MENT	UNEMPLOYMENT LEVEL	UNEMPLOYMENT RATE (%)	LABOR FORCE	EMPLOY- MENT	UNEMPLOYMENT LEVEL	UNEMPLOYMENT RATE (%)
CAPE CORAL-FT. MYERS (Lee)	279517	240110	39407	14.1	277328	240076	37252	13.4	283785	252809	30976	10.9
CRESTVIEW-FT. WALTON BEACH-DESTIN (Okaloosa)	96142	87343	8799	9.2	96470	88382	8088	8.4	95047	88399	6648	7.0
DELTONA-DAYTONA BEACH-ORMOND BEACH (Volusia)	253188	220217	32971	13.0	251986	220768	31218	12.4	251833	227604	24229	9.6
GAINESVILLE (Alachua and Gilchrist)	138795	126481	12314	8.9	138536	127059	11477	8.3	137464	129284	8180	6.0
JACKSONVILLE (Baker, Clay, Duval, Nassau, and St. Johns)	683185	600855	82330	12.1	685511	608492	77019	11.2	678874	621890	56984	8.4
LAKELAND-WINTER HAVEN (Polk)	276121	239291	36830	13.3	275533	240582	34951	12.7	273632	247331	26301	9.6
MIAMI-FT. LAUDERDALE-POMPANO BEACH (Broward, Miami-Dade, and Palm Beach)	2848184	2528362	319822	11.2	2855774	2538600	317174	11.1	2829357	2594809	234548	8.3
Ft. Lauderdale-Pompano Beach-Deerfield Beach Metropolitan Division (Broward)	978373	872484	105889	10.8	980960	881136	99824	10.2	985014	909841	75173	7.6
Miami-Miami Beach-Kendall Metropolitan Division (Miami-Dade)	1256655	1119183	137472	10.9	1258532	1113412	145120	11.5	1222735	1119107	103628	8.5
West Palm Beach-Boca Raton-Boynton Beach Metropolitan Division (Palm Beach)	613156	536695	76461	12.5	616282	544052	72230	11.7	621608	565861	55747	9.0
NAPLES-MARCO ISLAND (Collier)	145032	126629	18403	12.7	144446	127048	17398	12.0	147139	134140	12999	8.8
NORTH PORT-BRADENTON-SARASOTA (Manatee and Sarasota)	311300	269884	41416	13.3	310724	272225	38499	12.4	312812	282123	30689	9.8
OCALA (Marion)	134891	114108	20783	15.4	134346	114989	19357	14.4	136506	120754	15752	11.5
ORLANDO-KISSIMMEE-SANFORD (Lake, Orange, Osceola, and Seminole)	1110760	972485	138275	12.4	1115801	984199	131602	11.8	1108836	1010899	97937	8.8
PALM BAY-MELBOURNE-TITUSVILLE (Brevard)	267156	233321	33835	12.7	267335	235612	31723	11.9	266178	241730	24448	9.2
PALM COAST (Flagler)	32937	27298	5639	17.1	32715	27446	5269	16.1	32418	27952	4466	13.8
PANAMA CITY-LYNN HAVEN-PANAMA CITY BEACH (Bay)	88930	78348	10582	11.9	88691	78739	9952	11.2	86630	78299	8331	9.6
PENSACOLA-FERRY PASS-BRENT (Escambia and Santa Rosa)	211096	186917	24179	11.5	210638	188066	22572	10.7	206168	188110	18058	8.8
PORT ST. LUCIE (Martin and St. Lucie)	186464	159472	26992	14.5	186613	161133	25480	13.7	186828	166515	20313	10.9
PUNTA GORDA (Charlotte)	68751	59258	9493	13.8	68615	59809	8806	12.8	69146	61717	7429	10.7
SEBASTIAN-VERO BEACH (Indian River)	62436	53471	8965	14.4	62170	53663	8507	13.7	62773	56363	6410	10.2
TALLAHASSEE (Gadsden, Jefferson, Leon, and Wakulla)	192976	175721	17255	8.9	192337	176398	15939	8.3	191453	179076	12377	6.5
TAMPA-ST. PETERSBURG-CLEARWATER (Hernando, Hillsborough, Pasco, and Pinellas)	1307964	1136512	171452	13.1	1304849	1143134	161715	12.4	1297383	1173576	123807	9.5
FLORIDA												
NOT SEASONALLY ADJUSTED	9179000	8062000	1117000	12.2	9180000	8112000	1067000	11.6	9131000	8317000	813000	8.9
SEASONALLY ADJUSTED	9231000	8131000	1100000	11.9	9212000	8133000	1079000	11.7	9206000	8406000	800000	8.7
UNITED STATES												
NOT SEASONALLY ADJUSTED	152957000	136809000	16147000	10.6	152693000	137953000	14740000	9.7	153445000	140436000	13009000	8.5
SEASONALLY ADJUSTED	153170000	138333000	14837000	9.7	153059000	137792000	15267000	10.0	154140000	142221000	11919000	7.7

RELEASED MARCH 10, 2010

NOTE: Items may not add to totals or compute to displayed percentages due to rounding. All data are subject to revision.

STATE OF FLORIDA
COUNTIES RANKED BY UNEMPLOYMENT RATE
(NOT SEASONALLY ADJUSTED)

JANUARY 2010
(Preliminary)

RELEASED 03/10/2010

UNEMPLOYMENT			UNEMPLOYMENT		
RANK	COUNTY	RATE (%)	RANK	COUNTY	RATE (%)
1	FLAGLER	17.1	36	GULF	12.2
2	HERNANDO	15.7		FLORIDA	12.2
3	MARION	15.4	37	NASSAU	12.1
4	ST. LUCIE	14.9	38	BAKER	12.0
5	HENDRY	14.9	39	BAY	11.9
6	CITRUS	14.6	40	GLADES	11.9
7	INDIAN RIVER	14.4	41	ESCAMBIA	11.7
8	LEVY	14.3	42	GADSDEN	11.6
9	PASCO	14.3	43	SEMINOLE	11.6
10	PUTNAM	14.2	44	COLUMBIA	11.6
11	DIXIE	14.1	45	CLAY	11.2
12	LEE	14.1	46	DESOTO	11.2
13	OKEECHOBEE	13.9	47	GILCHRIST	11.1
14	HAMILTON	13.8	48	FRANKLIN	11.1
15	CHARLOTTE	13.8	49	MIAMI-DADE	10.9
16	MADISON	13.6	50	SANTA ROSA	10.9
17	MARTIN	13.6	51	BROWARD	10.8
18	OSCEOLA	13.5	52	SUMTER	10.8
19	LAKE	13.5		UNITED STATES	10.6
20	SARASOTA	13.4	53	CALHOUN	10.5
21	POLK	13.3	54	ST. JOHNS	10.4
22	MANATEE	13.2	55	JEFFERSON	10.1
23	VOLUSIA	13.0	56	UNION	10.0
24	TAYLOR	12.9	57	BRADFORD	10.0
25	HILLSBOROUGH	12.7	58	WALTON	9.9
26	PINELLAS	12.7	59	HOLMES	9.7
27	COLLIER	12.7	60	LAFAYETTE	9.6
28	BREVARD	12.7	61	WAKULLA	9.2
29	DUVAL	12.6	62	OKALOOSA	9.2
30	PALM BEACH	12.5	63	JACKSON	9.0
31	SUWANNEE	12.4	64	ALACHUA	8.7
32	HARDEE	12.3	65	LEON	8.5
33	HIGHLANDS	12.3	66	MONROE	8.2
34	ORANGE	12.3	67	LIBERTY	7.5
35	WASHINGTON	12.3			

NOTE: All data are subject to revision.

Source: Florida Agency for Workforce Innovation, Labor Market Statistics Center, Local Area Unemployment Statistics Program, in cooperation with the U.S. Department of Labor, Bureau of Labor Statistics.

STATE OF FLORIDA
 METROPOLITAN STATISTICAL AREAS (MSAs) AND METROPOLITAN DIVISIONS (MDs)
 RANKED BY UNEMPLOYMENT RATE
 (NOT SEASONALLY ADJUSTED)
 JANUARY 2010 (Preliminary)

1. Palm Coast MSA	17.1 %
2. Ocala MSA	15.4
3. Port St. Lucie MSA	14.5
4. Sebastian-Vero Beach MSA	14.4
5. Cape Coral-Ft. Myers MSA	14.1
6. Punta Gorda MSA	13.8
7. Lakeland-Winter Haven MSA	13.3
8. North Port-Bradenton-Sarasota MSA	13.3
9. Tampa-St. Petersburg-Clearwater MSA	13.1
10. Deltona-Daytona Beach-Ormond Beach MSA	13.0
11. Naples-Marco Island MSA	12.7
12. Palm Bay-Melbourne-Titusville MSA	12.7
13. West Palm Beach-Boca Raton-Boynton Beach MD	12.5
14. Orlando-Kissimmee-Sanford MSA	12.4
Florida	12.2
15. Jacksonville MSA	12.1
16. Panama City-Lynn Haven-Panama City Beach MSA	11.9
17. Pensacola-Ferry Pass-Brent MSA	11.5
18. Miami-Ft. Lauderdale-Pompano Beach MSA	11.2
19. Miami-Miami Beach-Kendall MD	10.9
20. Ft. Lauderdale-Pompano Beach-Deerfield Beach MD	10.8
United States	10.6
21. Crestview-Ft. Walton Beach-Destin MSA	9.2
22. Tallahassee MSA	8.9
23. Gainesville MSA	8.9

Released March 10, 2010

NOTE: All data are subject to revision.

Source: Florida Agency for Workforce Innovation, Labor Market Statistics Center, Local Area Unemployment Statistics Program, in cooperation with the U.S. Department of Labor, Bureau of Labor Statistics.

TOTAL NONAGRICULTURAL EMPLOYMENT
FLORIDA (Not Seasonally Adjusted)

Area	January 2010	December 2009	January 2009	Over-the-Month Change		Over-the-Year Change	
				Level	Percent	Level	Percent
Statewide	7,130,800	7,237,300	7,404,000	-106,500	-1.5%	-273,200	-3.7%
Cape Coral-Ft. Myers MSA	195,700	196,900	207,400	-1,200	-0.6%	-11,700	-5.6%
Crestview-Ft. Walton Beach-Destin MSA	76,800	78,400	78,200	-1,600	-2.0%	-1,400	-1.8%
Deltona-Daytona Beach-Ormond Beach MSA	153,800	154,700	159,200	-900	-0.6%	-5,400	-3.4%
Ft. Lauderdale-Pompano Beach-Deerfield Beach MD	697,000	708,400	730,000	-11,400	-1.6%	-33,000	-4.5%
Gainesville MSA	126,900	128,100	129,600	-1,200	-0.9%	-2,700	-2.1%
Jacksonville MSA	575,400	585,700	595,500	-10,300	-1.8%	-20,100	-3.4%
Lakeland-Winter Haven MSA	193,900	196,300	201,900	-2,400	-1.2%	-8,000	-4.0%
Miami-Ft. Lauderdale-Pompano Beach MSA	2,165,900	2,200,100	2,258,200	-34,200	-1.6%	-92,300	-4.1%
Miami-Miami Beach-Kendall MD	975,100	988,300	1,006,300	-13,200	-1.3%	-31,200	-3.1%
Naples-Marco Island MSA	109,300	110,600	116,500	-1,300	-1.2%	-7,200	-6.2%
North Port-Bradenton-Sarasota MSA	243,900	247,100	256,100	-3,200	-1.3%	-12,200	-4.8%
Ocala MSA	90,000	91,400	95,700	-1,400	-1.5%	-5,700	-6.0%
Orlando-Kissimmee-Sanford MSA	987,700	1,005,700	1,029,400	-18,000	-1.8%	-41,700	-4.1%
Palm Bay-Melbourne-Titusville MSA	192,100	195,300	199,100	-3,200	-1.6%	-7,000	-3.5%
Palm Coast MSA	17,600	18,000	18,000	-400	-2.2%	-400	-2.2%
Panama City-Lynn Haven-Panama City Beach MSA	70,600	71,100	70,400	-500	-0.7%	+200	+0.3%
Pensacola-Ferry Pass-Brent MSA	157,200	158,900	158,200	-1,700	-1.1%	-1,000	-0.6%
Port St. Lucie MSA	117,800	119,500	122,900	-1,700	-1.4%	-5,100	-4.1%
Punta Gorda MSA	39,000	39,500	41,000	-500	-1.3%	-2,000	-4.9%
Sebastian-Vero Beach MSA	43,100	43,700	46,500	-600	-1.4%	-3,400	-7.3%
Tallahassee MSA	170,100	171,200	173,300	-1,100	-0.6%	-3,200	-1.8%
Tampa-St. Petersburg-Clearwater MSA	1,113,900	1,128,200	1,155,800	-14,300	-1.3%	-41,900	-3.6%
West Palm Beach-Boca Raton-Boynton Beach MD	493,800	503,400	521,900	-9,600	-1.9%	-28,100	-5.4%

Note: Employment estimates have been rounded to the nearest hundred. Sum of detail may not equal totals due to rounding or the exclusion of certain industries from publication. All data are subject to revision. Released March 10, 2010.