



New VPK Provider Reimbursement Rates

As of July 1, 2011, the new rates are:

- School year \$2,407.04 per child or \$4.45 per hour
- Summer \$2,046.46 per child or \$6.82 per hour

Summer VPK programs will be paid under the current rate of \$7.34 per hour until June 30, 2011. The remainder of the summer program (July 1 to August 19, 2011) will be paid at the new rate of \$6.82 per hour. Please plan accordingly.

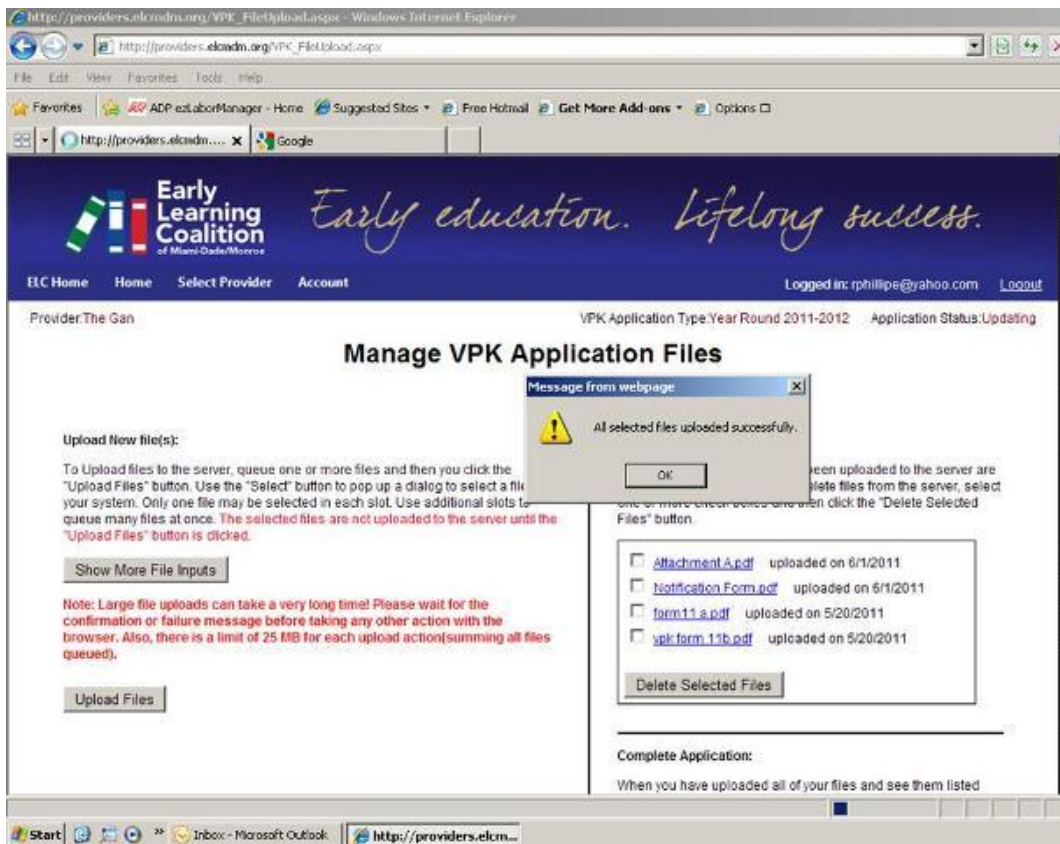
New VPK Class Ratio

Beginning with the new school year, the staff/student ratio is 1:11 or 2:20. This means each VPK class (group) with a lead teacher may now have 11 students (VPK and non-VPK). If there is a 12th student, an assistant is required to be in attendance and the class cannot exceed a total of 20 children.

Please remember you must have at least four (4) children enrolled before you can start your program. Providers who are approved and do not have four (4) children on the first day of school must contact the Coalition to modify their schedules.

VPK School Year 2011-2012

ALL VPK providers for the school year program should submit the **new AWI VPK Forms 10, 11A & B, Provider Agreement**, and **Attachment A**. Providers must submit their applications online at <http://providers.elcmdm.org/Login.aspx> or click on the "Provider Portal" link on the www.vpkhelp.org website. Once you have uploaded your documents, you will see the pop-up menu pictured below.



If you see the image above, this is confirmation that the Coalition has successfully received your application. When you have completed this process, you may send an **email** to your Certification Specialist to inform her you have submitted your application. She will call you if any item is missing or requires correction; please do not call her as she will be busy processing applications.

If you are experiencing difficulty with the Provider Portal, you may contact Elizabeth Machado at 305-646-7220, ext. 229. Also, if you have not yet attended a training on the new application process and you would like to do so, please contact Ms. Machado and she will tend to your request.



www.elcmdm.org



Join our
mailing
list