



# CEO Presentation

June 6, 2011

# Budget Reductions

School Readiness	\$ 11,933,214
Voluntary Pre-Kindergarten	780,667
FL DOE -VPK Regional Coordinator	105,000
<b>Total Budget Reductions</b>	<b>\$ 12,818,881</b>

# Budget Reductions

---

- Budget reductions apply proportionally to both Miami-Dade and Monroe Counties
- Disenrollment will only apply to Miami-Dade County
- Monroe County will manage budget reduction through attrition and may submit a request to increase the parent fees

# Proposed Disenrollment Timeline



May 18	Letter to AWI advising them of budget plan
May 20	Executive Committee/Strategic Planning Committee meeting
June 2	Conference call with AWI
June 6	BOD meets and decides on course of action
June	Media Advisory Released
June	Disenrollment notification letters to parents with notice of right to appeal
July	Plan amendment submitted to AWI
July	Community Forums Held (2 Miami-Dade and 2 Monroe)
July	Mail parent co-payment increase notification letters
July	Central agencies to send letters to families on waitlist
July 1	Higher parent copayments become effective
July 31	Deadline to file technical appeals
Aug 12	Provider Services Committee reviews technical appeals
Sept 15	Parents to be notified of technical appeal outcome
Oct. 1	Disenrollment effective date - Phase I
TBA	Disenrollment effective date - Phase II

# Recommendations

- **Protect Funding for Children and Providers**
  - Impact all areas, not just child care slots
  - Across the board reduction of 10%
  - Maintain slot expenditures at 81%
  - No reductions to provider reimbursement rates
  - No reductions to gold seal reimbursements
  - Strategically move some quality dollars from the quality reserve allocation to slots to impact fewer children and providers
- **Allow More Children to Participate in the SR Program By Setting Time Limits**
  - Continue to serve children 0-12 in the mandatory categories, but prioritize children 0-5 in BG-8/working poor category (Note: Under the current disenrollment policy, school age children in the BG-8 category will have to be disenrolled due to the budget reductions).
  - Set a time limit for all BG-8 children. Children exit the program upon entering kindergarten, unless all 0 - 5 children on the waitlist have been served.
  - Increase parent co-pay

# Recommendations

- **Comply With Grant Agreement and Safeguard Funding by Maintaining Efficient Operations**
  - Adhere to the board's disenrollment policy
  - Follow the proposed disenrollment timeline
  - Start the disenrollment process effective 10/1/2011
  - Notify parents and providers in writing during the month of June
  - Review and decide on all appeals during the months of July & August
  - Handle all appeals in writing
  - All appeals to be heard by the Provider Services Committee and staff
  - Provider Services Committee to receive a special orientation on the budget & federal regulations that govern the SR program
  - Members of ELC Board of Directors to sign-up for at least one of four public forums
  - If current partners are unable to continue to providing services under the new budgets, consider releasing a Request for Proposal for SR and VPK services. This will allow partners and the Coalition to assess and align the current service delivery model, staffing levels, and state mandates with the new reduced budget. The goal of this process would be to maintain quality and operational efficiency under a new operating environment.

# Proposal Of Revised Parent Co-pay Structure - Miami Dade County

---



- **Increase co-payments by scaled increments according to income level categories**
- **Families with higher incomes receive larger degree of increase**
- **Families with lower incomes receive smallest degree of increase**
- **Highest degree of increase is for families at 200% of the Federal Poverty Level**

# Sample Fee Schedule

	Current Full Time		Scenario 1 Full time % Change		Scenario 2 Full time % Change	
	Income Level 1	\$ 0.80		\$ 0.82	2.50%	\$ 0.84
Income Level 2	\$ 1.60		\$ 1.66	3.75%	\$ 1.72	7.50%
Income Level 3	\$ 2.40		\$ 2.55	6.25%	\$ 2.70	12.50%
Income Level 4	\$ 3.20	FPL	\$ 3.40	6.25%	\$ 3.60	12.50%
Income Level 5	\$ 4.00		\$ 4.25	6.25%	\$ 4.50	12.50%
Income Level 6	\$ 4.80	150% FPL	\$ 5.14	7.08%	\$ 5.48	14.17%
Income Level 7	\$ 5.60		\$ 6.00	7.14%	\$ 6.40	14.29%
Income Level 8	\$ 6.40		\$ 6.87	7.34%	\$ 7.34	14.69%
Income Level 9	\$ 7.20		\$ 7.75	7.64%	\$ 8.30	15.28%
Income Level 10	\$ 8.00		\$ 8.65	8.13%	\$ 9.30	16.25%
Income Level 11	\$ 8.80		\$ 9.50	7.95%	\$ 10.20	15.91%
Income Level 12	\$ 9.60	185% FPL	\$ 10.40	8.33%	\$ 11.20	16.67%
Income Level 13	\$ 10.40		\$ 11.30	8.65%	\$ 12.20	17.31%
Income Level 14	\$ 11.20	200% FPL	\$ 12.20	8.93%	\$ 13.20	17.86%

# Example for Family of 4

Gross income of \$30,000, with 2 children in care

	Annual Gross Income	Family Size	# Children in care	Daily Fee -- 1st child	Daily Fee -- 2nd child	Service days	Total Parent Contribution	Add'l amt to Parent
<b>Current Fee Schedule</b>	\$ 30,000.00	4	2	\$ 4.80	\$ 2.40	261	\$ 1,879.20	
<b>Scenario 1</b>	\$ 30,000.00	4	2	\$ 5.14	\$ 2.57	261	\$ 2,012.31	\$ 133.11
<b>Scenario 2</b>	\$ 30,000.00	4	2	\$ 5.48	\$ 2.74	261	\$ 2,145.42	\$ 266.22

Scenario 1  
 Estimated cost savings on direct child care expenses \$524,478

Scenario 2  
 Estimated cost savings on direct child care expenses \$1,020,090

# Coalition Admin. Reductions

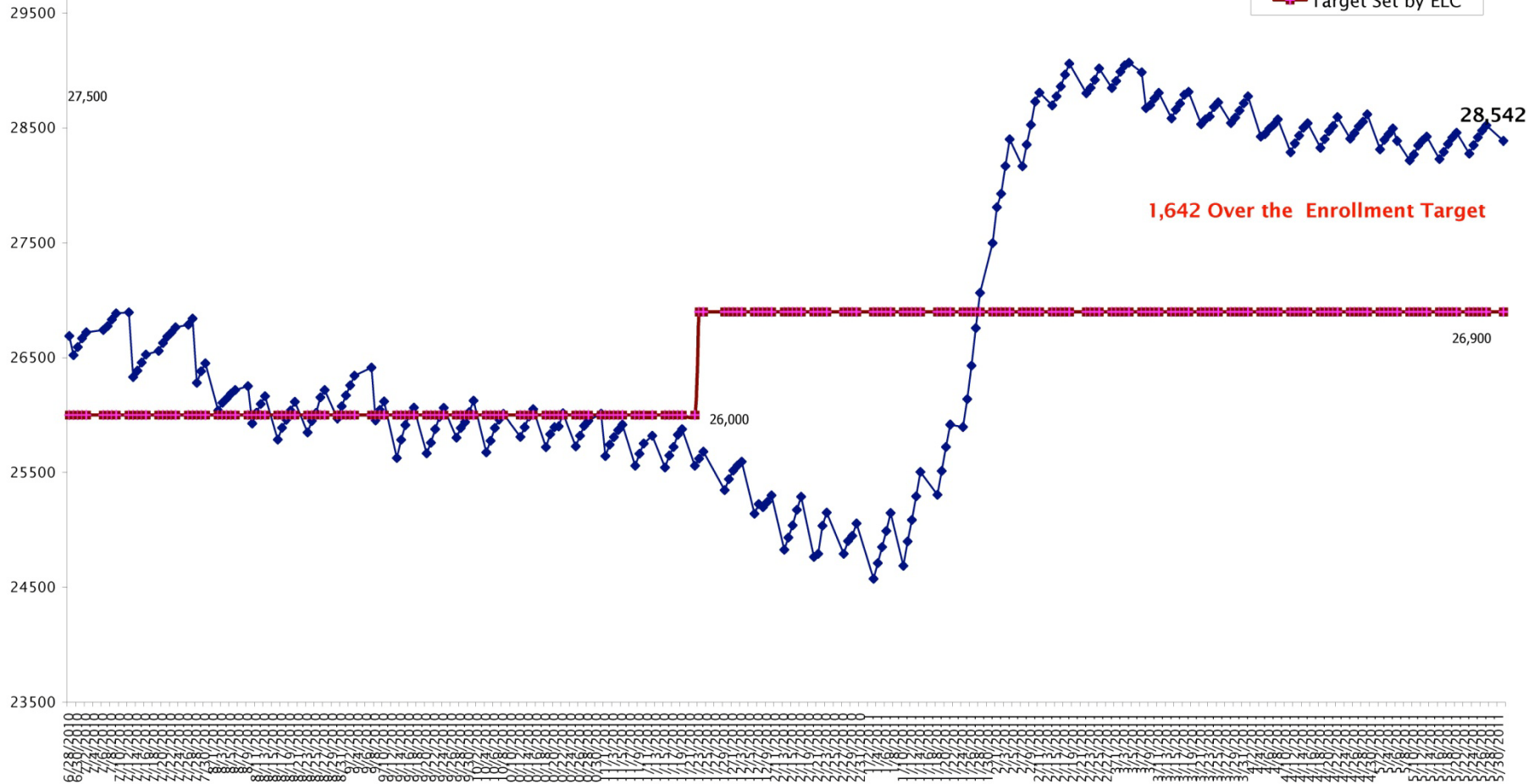
---

- Reduce number of funded positions
- Restrict travel and other misc. expenses
- IT investments will yield savings due to more effective and efficient day to day operations
- Already renegotiated contracts with cell phone providers under the state contract
- Purchasing from state contracts whenever possible to save \$

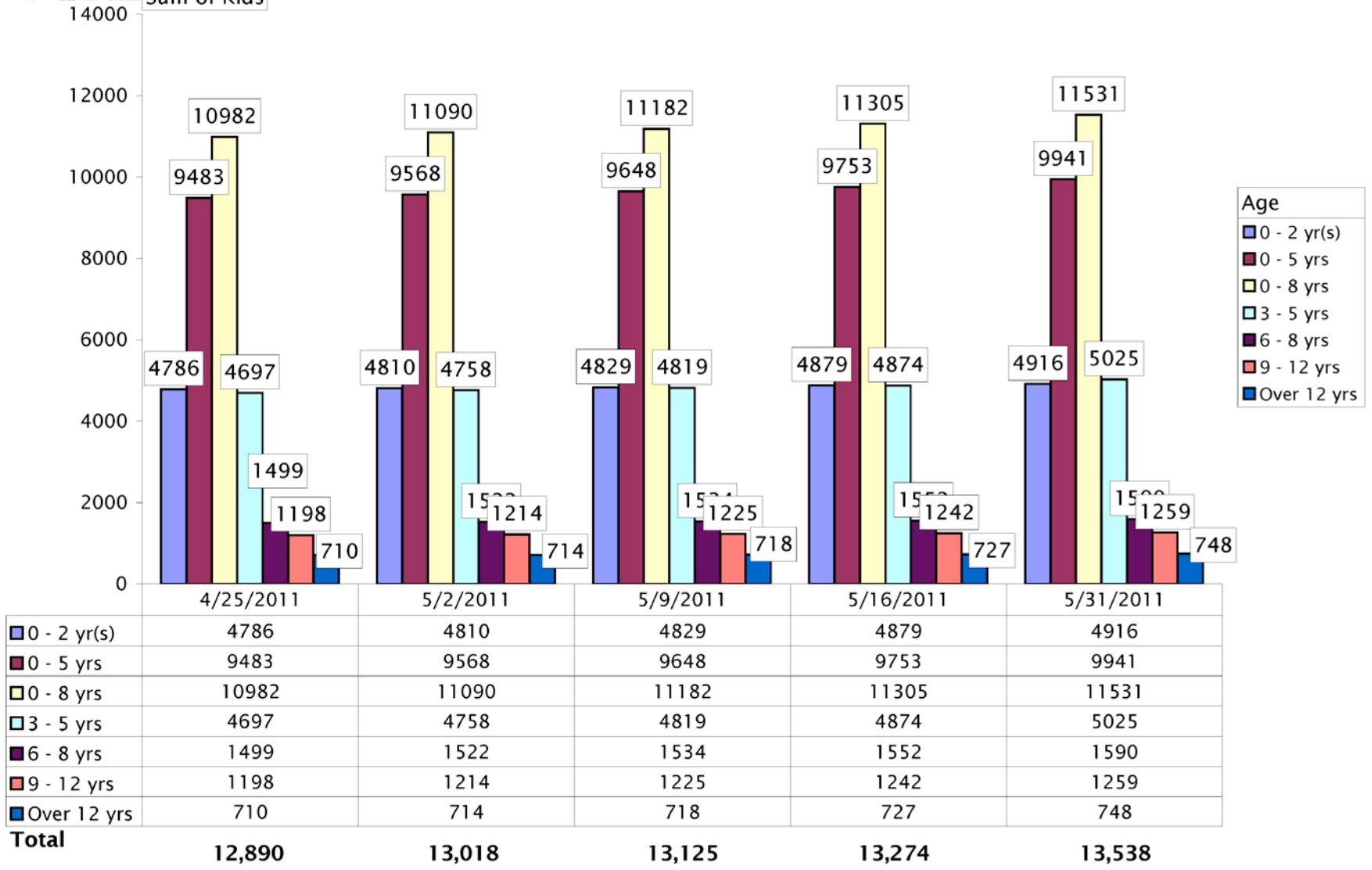


# Early Learning Coalition of Miami-Dade Enrollment Target

Source: ELC IT Weekly Report



# Waitlist by Age Groupings



# Early Learning Challenge Fund



- U.S. DOE and HHS announced Race to the Top – Early Learning Challenge Fund
- Competition for states to create an integrated, high-quality early learning system including:
  - Increase enrollment of low-income and disadvantaged children in each age group
  - Design and implement an integrated system of high-quality early learning programs and services
  - Assessments that conform with the National Research Council

# Early Learning Challenge Fund



- Awards will go to states with ambitious yet achievable plans for comprehensive early learning education reform
- Our Quality Rating Improvement System is not statewide, but through the Florida Quality Counts Collaborative the state may be able to compete
- Only state agencies can apply for these funds- so we will be working closely with the Office of Early Learning (under DOE) on the application

# Monroe School Readiness Health Screening Project

---



- Florida Keys AHEC was granted \$35,000 from the Human Services Advisory Board for the 2011-12 School Readiness child health screening project

# Our Kids Summer Camps

---

- Scholarships offered to caregivers of our clients for local day camps
- 420 applications were received and almost \$300,000 were earmarked in just 2 weeks
- 100 teenagers in foster care were targeted to attend week-long overnight camps such as DCF's Camp Sib, Myron Rolle, CHARLEE's Buffalo Cove and others

# **Comparative Analysis of Aggregate Educational Data Between Children in Foster Care and the General Population**

**Florida Department of Children  
and Families**

**May 16, 2011**

# Data Cohorts

**Based on input from the Education Committee, DCF made two formal data requests to DOE last year. The two cohorts consisted of:**

- All children between 7 and 18 years old in out of home care at any point during school year 2009-10
- All children between 13 and 18 years old in out of home care at any point during school year 2009-10.

The second cohort allowed for several calculations specific to high school graduation that would not have made sense to try and calculate for the younger population.

# Measures Examined

**Based on input from the Education Committee, DCF requested the following measures, which were calculated by DOE and reported in aggregate for both the population of children in foster care, and the general education population:**

## **Full Cohort**

- Percentage of students in appropriate grade based on age.
- Percentage of students at grade level for reading.
- Percentage of students at grade level for math.
- Percentage of students who changed schools during the year, and number of placement changes.
- Percentage of students with IEPs who also had a surrogate parent\*.

## **Older Cohort**

- Percentage of children who should have taken the 10<sup>th</sup> grade FCAT because they had failed it previously, and percentage of these who passed it.
- Percentage of children requiring special education services.
- Percentage of students who changed schools during the year, and number of placement changes.
- Children who withdrew from school without a request for a transfer of records (proxy for dropout rate).
- Percentage of children enrolled in 12<sup>th</sup> grade who graduated with a standard diploma.

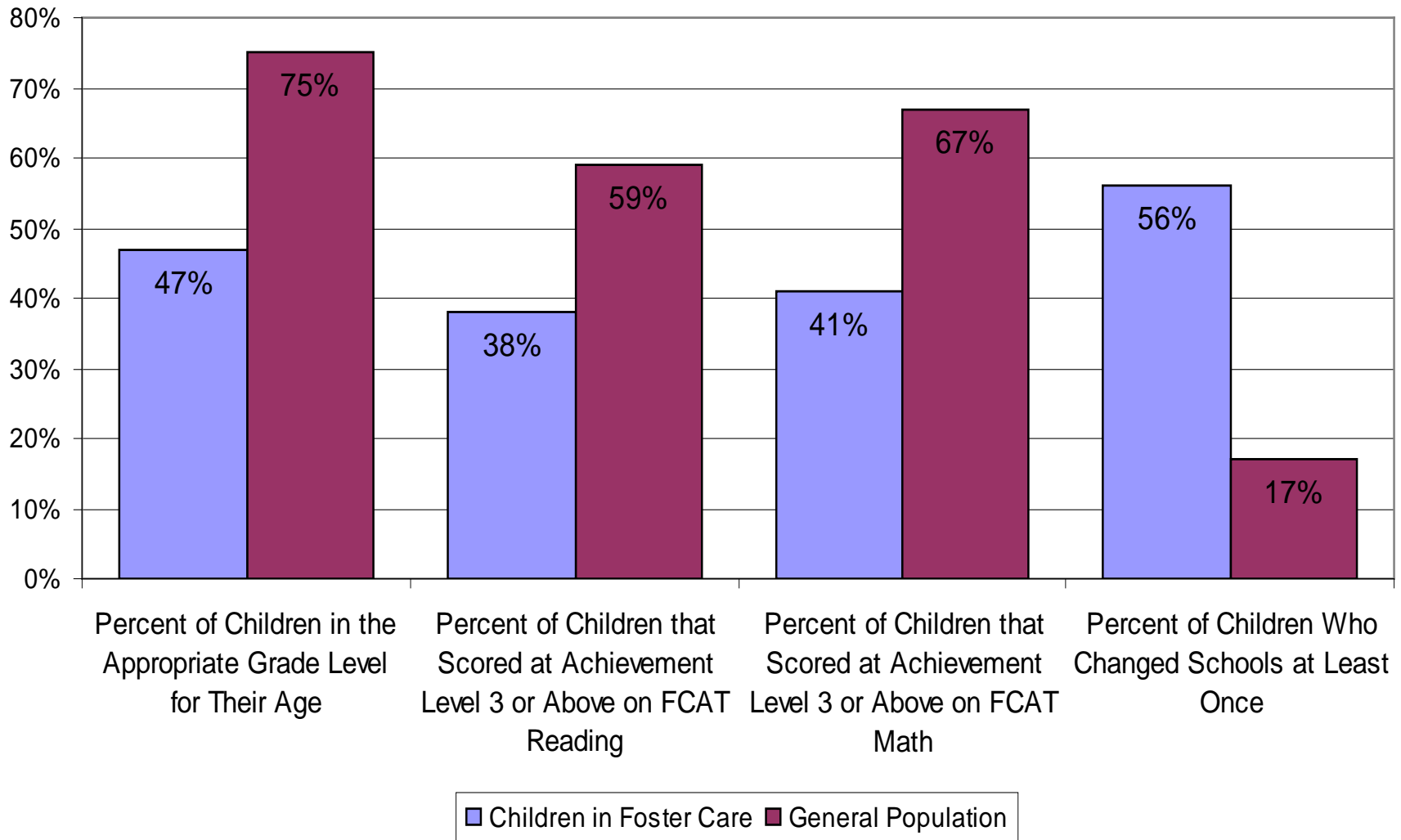
\*The only measure we were not able to obtain any data on was this one, due to surrogate parents. DOE does not track this information at the state level.

# Caveats

## **There are several important caveats to the following analyses:**

- While complete statewide data was provided in aggregate, due to small cell sizes (fewer than 10) more than half of the individual county data was not reported for some measures, which limited the analysis to statewide data only.
- Numbers and percentages were also not provided if a cell had 0% or 100% on any measure, although this did not impact the state level data.
- Because these are presumably the full population of data on these children in Florida, inferential statistical analysis (i.e. significance testing) is not necessary or appropriate. Differences observed are not estimates, but actual measured differences in these populations. Conclusions about the importance of these differences are not questions for statisticians, but for policy experts to draw.

## Comparison of Children, Ages 7 to 18, in Foster Care to General Population on Selected Educational Indicators for 2009-2010

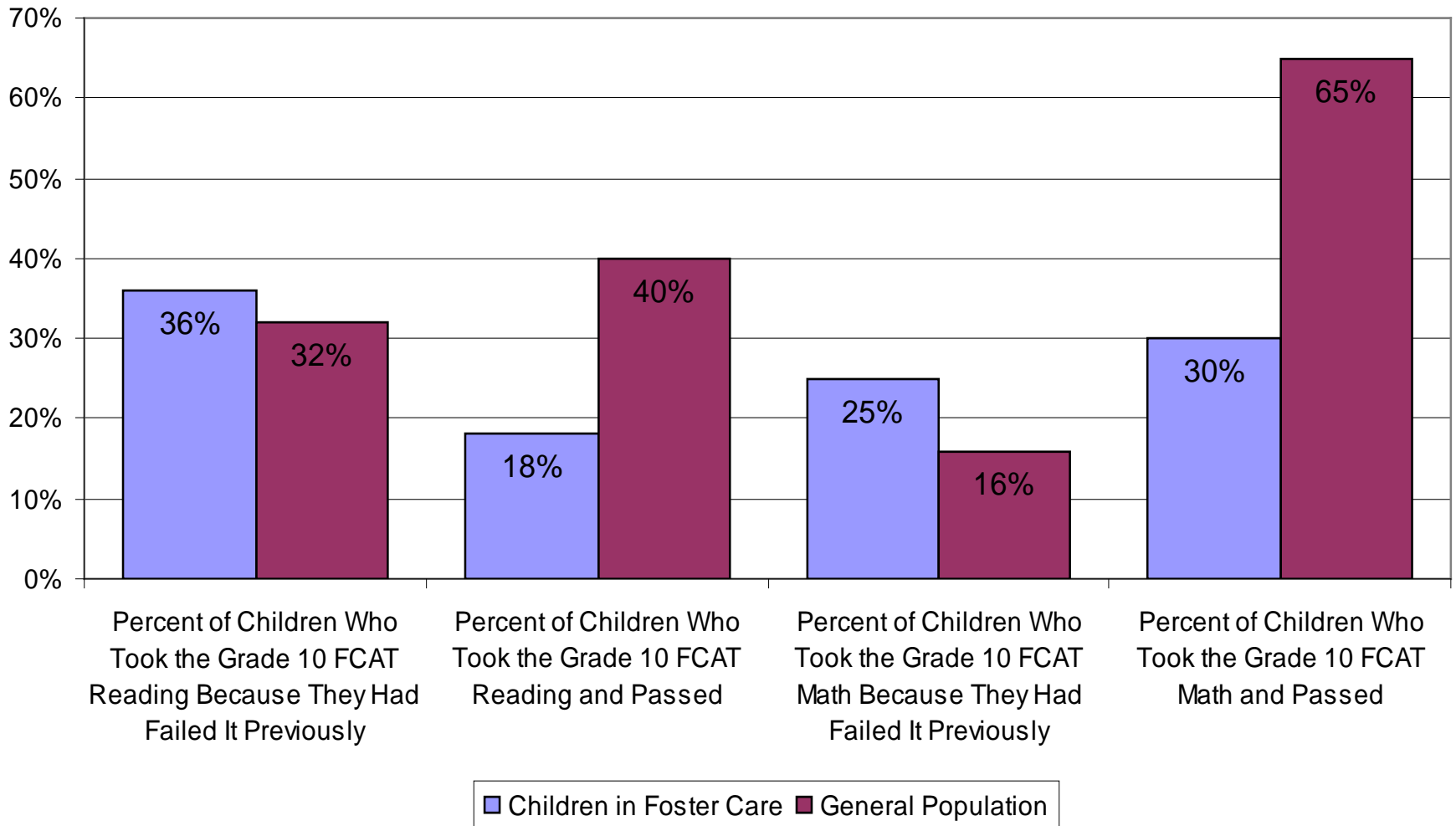


# Specific Findings for Full Cohort

## Children in foster care were:

- Much *less* likely to be in an age-appropriate grade-level.
- Much *less* likely to score a 3 or above (i.e. passing) on the Reading portion of the FCAT.
- Much *less* likely to score a 3 or above (i.e. passing) on the Reading portion of the FCAT.
- Much *more* likely to have changed schools at least once.
  - And among children who *did* change schools, children in foster care tended to move twice as often as the general population.

## Comparison of Children, Ages 13 to 18, in Foster Care to General Population on Selected Grade 10 FCAT Indicators for 2009-2010

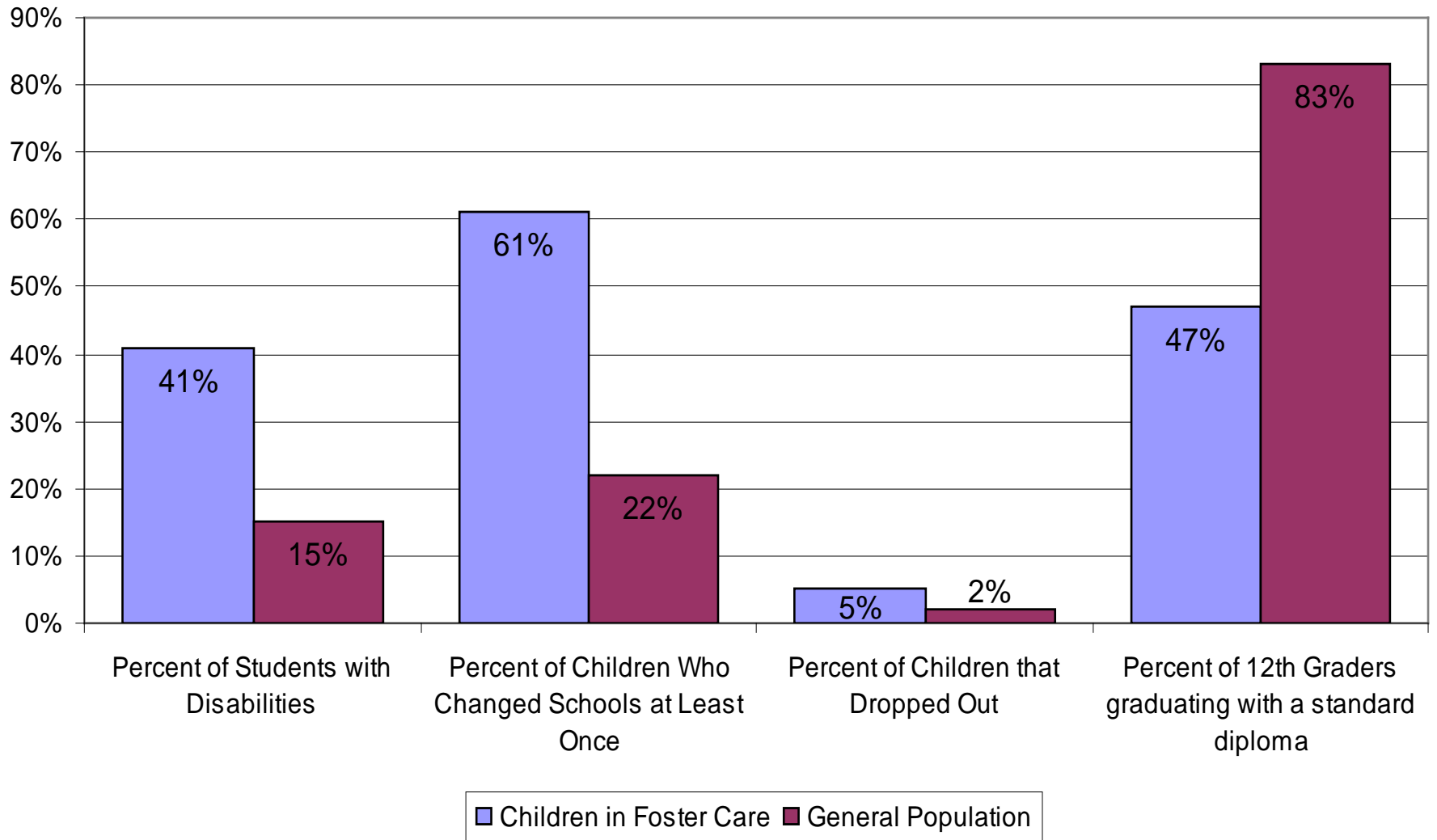


# Specific Findings for Older Cohort

## Children in foster care were:

- Slightly *more* likely to be taking the 10<sup>th</sup> grade FCAT Reading portion because they had failed it at least once before.
- Much *less* likely to score a 3 or above (i.e. passing) on the Reading portion of the 10<sup>th</sup> grade FCAT.
- Much *more* likely to be taking the 10<sup>th</sup> grade FCAT Math portion because they had failed it at least once before.
- Much *less* likely to score a 3 or above (i.e. passing) on the Math portion of the FCAT.

## Comparison of Children, Ages 13 to 18, in Foster Care to General Population on Selected Educational Indicators for 2009-2010



# Specific Findings for Older Cohort

## Children in foster care were:

- Much *more* likely to have a disability.
- Much *more* likely to have changed schools at least once.
  - And among children who *did* change schools, children in foster care tended to move twice as often as the general population.
- Much *more* likely to drop out.
- Much *less* likely to graduate with a standard diploma.

# Overall Findings

**Almost without exception, among the measures examined, children in foster care were much more likely to have educational deficits and poor educational outcomes than students in the general population.**

# Next Steps

**Additional study is needed to determine what factors are the most important, whether there are interaction effects that need to be considered, and whether these can be mitigated in order to improve the educational experience and outcomes of Florida's children in foster care. Specifically, additional analyses should seek to control for, or examine the impact of:**

- Disability.
- Race, ethnicity and gender.
- Age at removal.
- Permanency, and the amount of time it takes to achieve it.

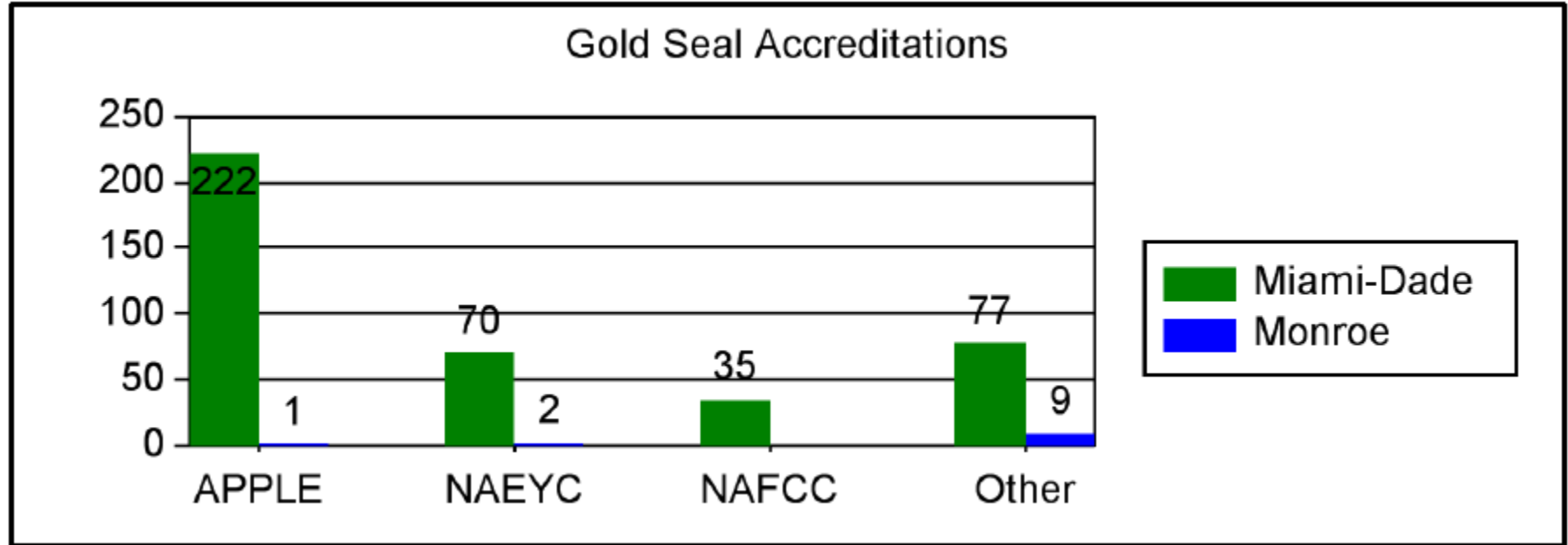
# Miami-Dade/Monroe Accredited Individual Sites



## Accredited Individual Sites by County

County	License Type	Sites
Miami-Dade	Center	356
Miami-Dade	Family	35
Monroe	Center	12
<b>Total Sites</b>		<b>403</b>

# Miami-Dade/Monroe Gold Seal Sites

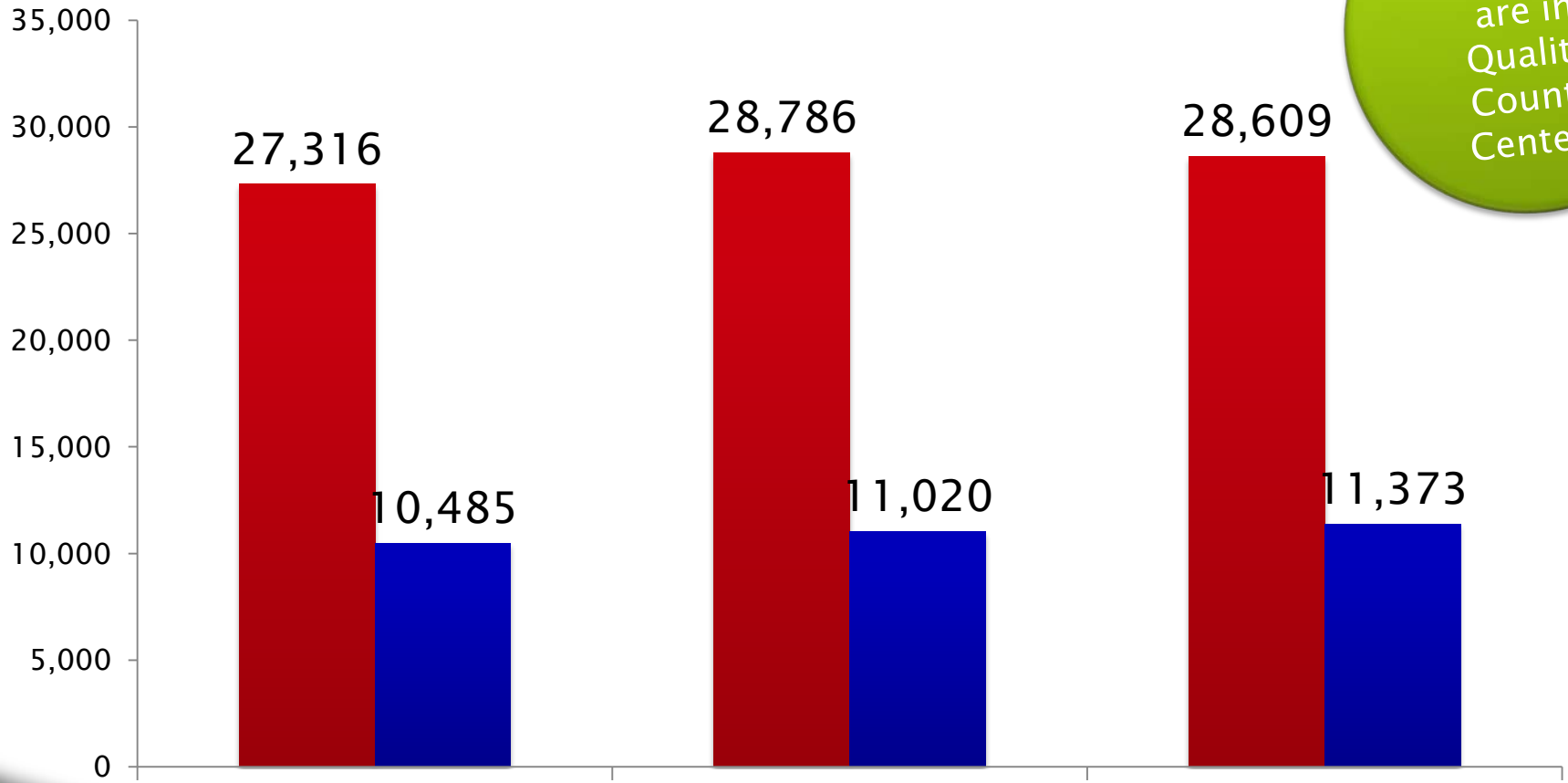


Note: Some sites are accredited by more than one accrediting body.

# SR Children in Quality Counts Centers



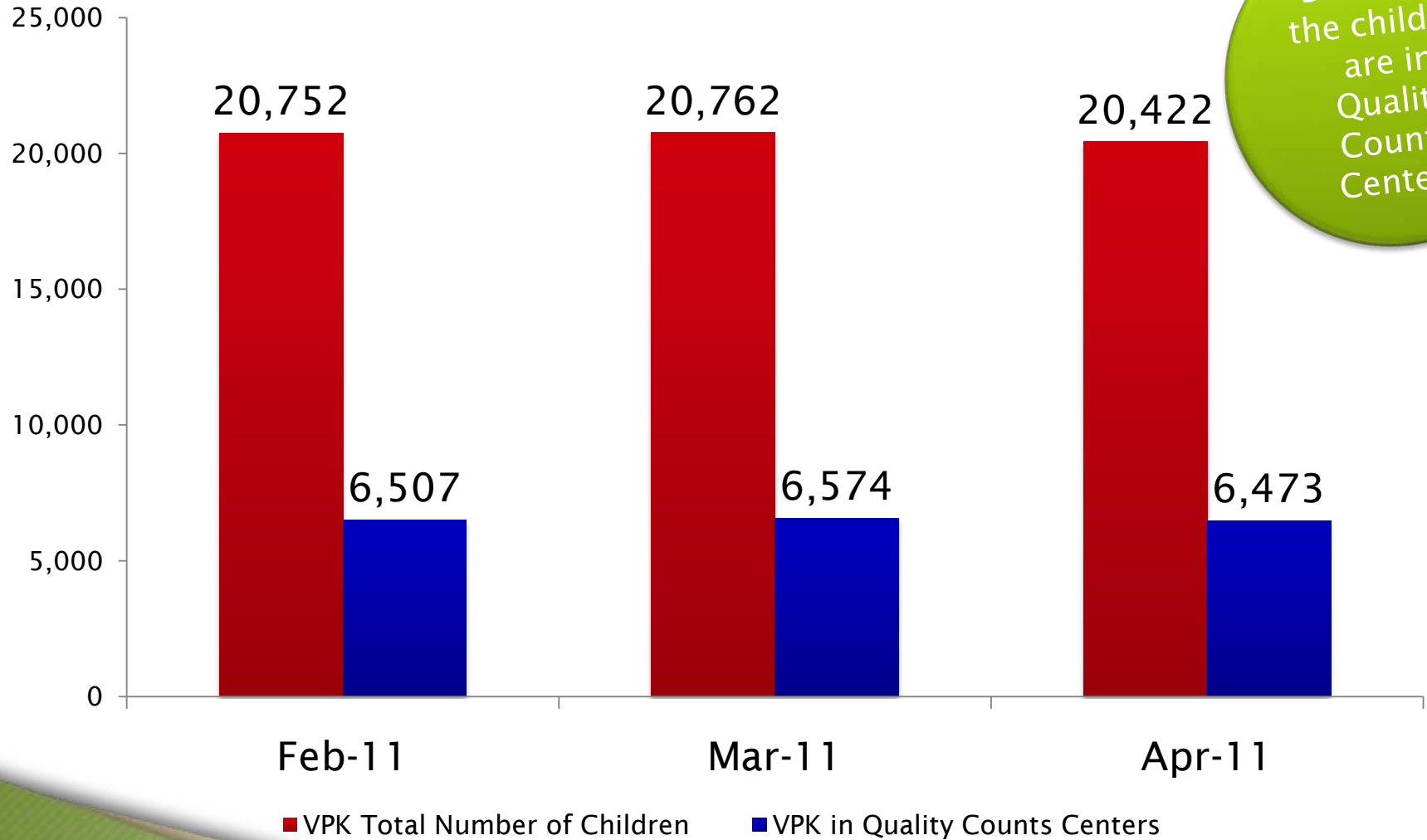
39.75% of the children are in Quality Counts Centers



■ SR Total Number of Children    ■ SR in Quality Counts Centers

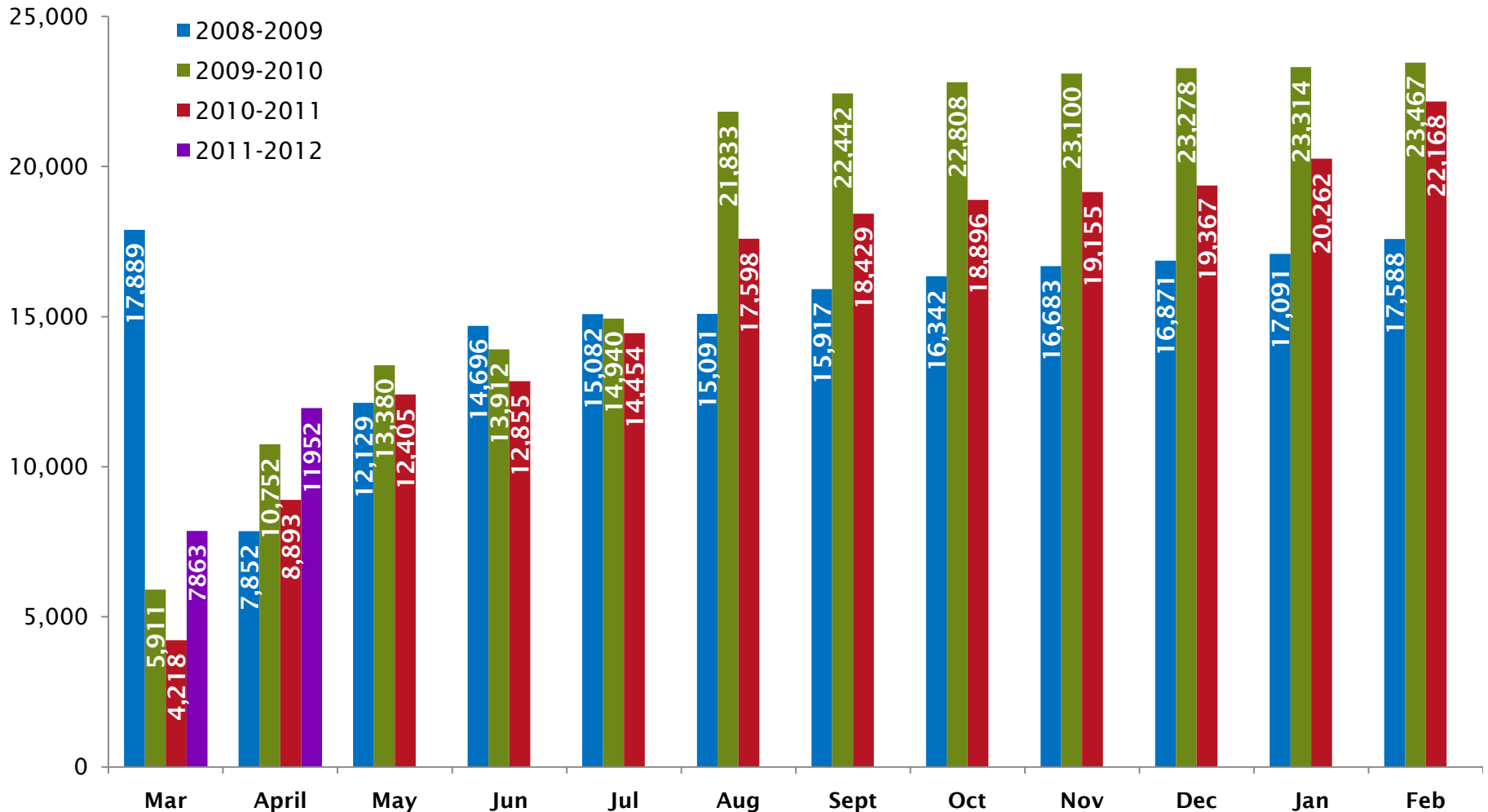
Source: EFS Impromptu Query 5/27/2011

# VPK Children in QC Centers



31.70% of  
the children  
are in  
Quality  
Counts  
Centers

# VPK Certificates of Eligibility Miami-Dade



2009 Summer COE are included in total. March 271 and April 119  
 14,144 applications have been processed for the 2009-2010 school year

Source: EFS delivered through CDS report to Coalition

# Legislative Wrap up

---

## HB 139

- Child Care Facilities

- Revises criteria for child care facility, large family child care home, or family day care home to obtain & maintain designation as Gold Seal Quality Care provider; provides for certain household children to be included in calculations regarding capacity of licensed family day care homes & large family child care homes; provides conditions for supervision of household children on premises of family day care homes & large family child care homes; revises advertising requirements applicable to child care facilities. Effective Date: July 1, 2011

# Legislative Wrap up

---

## HB 1255

- **Education Accountability**

- Revises numerous provisions relating to K-12 public education system; revises provisions relating to virtual instruction courses, school board member acceptance of gifts, Opportunity Scholarship Program, McKay Scholarships, Voluntary Prekindergarten Education Program, special education services, requirements for middle grades promotion & high school graduation, digital curriculum, career & professional academies, use of restraint & seclusion on students with disabilities, assistive technology, statewide assessments, college readiness, school improvement, designation of school grades, education budgets, funding for exceptional student education, & teacher qualifications.

Effective Date: July 1, 2011

# Legislative Wrap up

---

## SB 2120

- Authorizes the Department of Revenue to provide certain information regarding the gross receipts tax to the State Board of Education, the Division of Bond Finance, and the Office of Economic and Demographic Research. Requires that, for purposes of servicing public education capital outlay bonds, the State Board of Education disregard the effects on the gross receipts tax revenues collected during a tax period of a refund resulting from a specified settlement agreement, etc. **For the VPK program, raises to 20 the number of students for the maximum class size and for each class composed of 12 or more students an additional instructor is required. EFFECTIVE DATE: upon becoming a law, except as otherwise provided**

# Legislative Wrap up

---

## SB 2156

- Transfers the functions and trust funds of the Agency for Workforce Innovation to other agencies. Transfers the Office of Early Learning Services to the Department of Education. Transfers the Office of Unemployment Compensation to Jobs Florida. Transfers the Office of Workforce Services to Jobs Florida. Transfers the functions and trust funds of the Department of Community Affairs to other agencies. Transfers the Florida Housing Finance Corporation to Jobs Florida, etc. EFFECTIVE DATE: July 1, 2011