



# Take it to Heart!

*Early Childhood Conference*

**JANUARY 14, 2012**

**Murray E. Nelson Government & Cultural Center**

102050 Overseas Hwy (MM102.5 Bayside), Key Largo, FL 33070

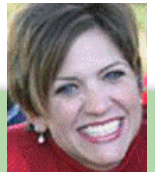
Check-In 8:30am-9am • **WORKSHOP 9AM – 3:30PM** • *One Hour Lunch on Your Own*  
Pre-Registration \$10 per person (mail payment to address below) • Earn up to 7 In-Service Hours

**RSVP TO 305-809-5000 EXT 231 BY JANUARY 10, 2012**



*Keith Pentz*

## PRESENTERS



*Amanda Moore*

Keith L. Pentz has been in the field of education for more than 25 years. Keith will present two workshops that will focus on the brain/heart connection and the impact this has on the social and development of young children. Co-author of the nationally recognized literacy- and resiliency-based conflict resolution and violence prevention curriculum Peace by Piece, Keith has trained more than 1,000 teachers, administrators, and parents to use the curriculum. Keith speaks to groups at the local, regional, national, and international level, and his areas of expertise include brain-compatible teaching and learning strategies, early literacy, learning environments, conflict resolution, early childhood curriculum and instruction, and positive discipline models.

Amanda Moore will present "Social-Emotional Supports for Classrooms, Caregivers and Communities. Amanda is the State Inclusion Network Coordinator at Florida's Office of Early Learning. She received her Bachelor's Degree in Exceptional Student Education: Emotionally Handicapped, from the University of North Florida, and has taught children in self-contained and inclusive classrooms from grades Pre-K to 8, as well as after-school and hospital/homebound settings. Amanda has been a member of Florida's Warm Line program since its inception in 2000, and has coordinated this network since 2004. Amanda supports local early learning coalitions and inclusion specialists to ensure child care providers have access to targeted, quality inclusion supports. She is a member of Florida's Expanding Opportunities Team and other cross-sector statewide initiatives that promote department collaboration and inclusion of all children in early learning programs.

*Partially funded by:*



### REGISTRATION & INFORMATION

Laurie Dunn

Provider Services Coordinator  
Wesley House Family Services

1304 Truman Avenue, Key West, FL 33040

Tel: 305.809.5000 • Fax: 305.809.5010

*Co-Sponsored by:*

